

January 31, 2022

Via e-mail to marc.betsworth@ontario.ca

Mr. Marc Betsworth
Senior Policy Advisor
Digital Learning Policy Branch
Ministry of Colleges and Universities
15, 315 Front Street West
Toronto ON M7A 0B8

Dear Marc:

Re: Contact North | Contact Nord Interim Report – Q3 2021-2022

In accordance with Schedule “F” of the 2021-2022 Transfer Payment Agreement between the Ministry of Colleges and Universities and Contact North | Contact Nord, I am pleased to attach Contact North | Contact Nord’s Q3 Interim Report.

I am pleased to report Contact North | Contact Nord had another strong quarter with 454,377 requests for services fulfilled, 15,929 student course registrations generated and 1,353 small, remote, rural Indigenous and Francophone communities served.

In keeping with our customary review schedule, I suggest we meet virtually during the week of February 28, 2022. Please advise your availability as well as a list of any specific questions you have related to the Q3 Interim Report so we can address during the review session.

In the meantime, if you have any questions, please do not hesitate to contact me.

Sincerely,



Maxim Jean-Louis
President – Chief Executive Officer

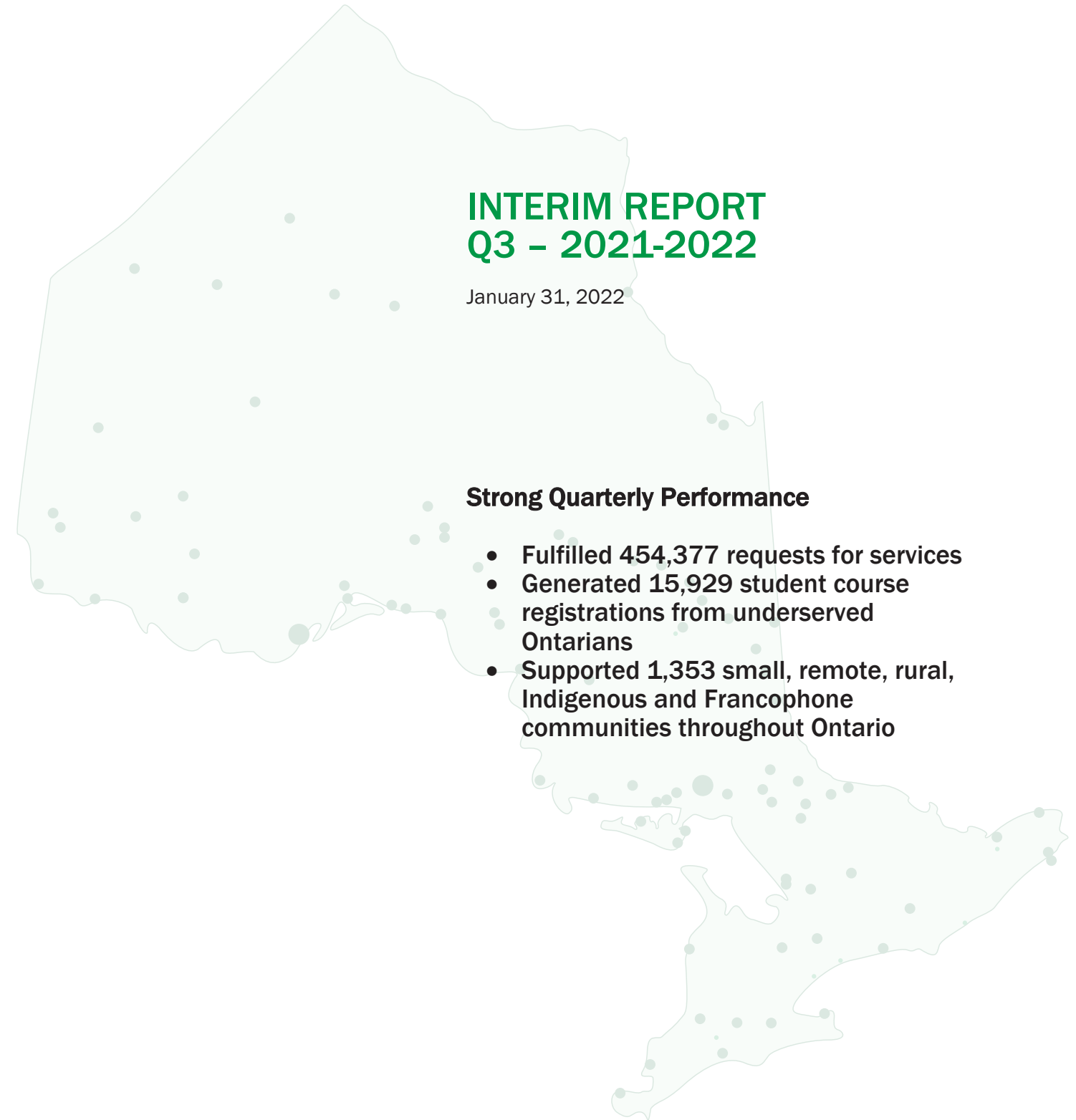
Attachment (1)

INTERIM REPORT Q3 – 2021-2022

January 31, 2022

Strong Quarterly Performance

- Fulfilled 454,377 requests for services
- Generated 15,929 student course registrations from underserved Ontarians
- Supported 1,353 small, remote, rural, Indigenous and Francophone communities throughout Ontario



ONTARIO'S COMMUNITY-BASED BILINGUAL DISTANCE EDUCATION AND TRAINING NETWORK

CONTACT **NORTH**
NORD

Supporting
Rural & Remote Ontario



Ontario's community-based bilingual distance education and training network helps underserved residents in **1,300+** small, rural, remote, Indigenous and Francophone communities access education and training without leaving their communities.

LOCAL SUPPORT SERVICES

For Ontario students

1. Information on online programs and courses
2. Help to register, and information on financial options
3. Free use of computers and Internet at 116 online learning centres*
4. Free use of web conferencing and videoconferencing platforms
5. Supervision of exams and tests

* Not all online learning centres may be open at this time.

For Ontario's education and training providers

1. Use of distance delivery platforms
2. Platform training for instructors
3. Province-wide student recruitment campaigns in 1,300+ Ontario communities
4. Comprehensive instructor resources at teachonline.ca
5. Local support services for students

For a more detailed description of our services, visit contactnorth.ca/services.

SERVICES DELIVERED IN PARTNERSHIP WITH

24 Public colleges	20 Skills development training providers
23 Public universities	170 Ontario Works offices
9 Indigenous institutes	188 Employment Ontario offices
76 District school boards	114 Community organizations hosting our Online Learning Centres
200 Literacy and basic skills providers	4,282 Community-based organizations

ANNUAL RESULTS FOR ONTARIANS

180,000	student course registrations generated
1.3 million+	service requests fulfilled
99	province-wide recruitment campaigns
375,000+	visitors to Contact North Contact Nord portals
1.2 million+	pageviews
92%	of clients satisfied

ONTARIO'S ONLINE LEARNING PORTALS HOSTED BY CONTACT NORTH | CONTACT NORD

- studyonline.ca for information on 2,600 online programs and 42,000 online courses from Ontario institutions
- e-channel.ca for information on online literacy and basic skills courses in Ontario
- teachonline.ca for resources for faculty and instructors teaching online and at a distance

CONTACT **NORTH**
NORD

Supporting
Rural & Remote Ontario

Ontario 

Table of Contents

Q3 2021-2022 Interim Report.....	1
Section 1 – Contact North Contact Nord Outcomes – Performance Indicator Snapshot, December 31, 2021	2
Section 2 – How Contact North Contact Nord Fulfilled the Project Activities in Q3 2021-2022	3
1. Registration, Advisory Services and Online Learning Centres	3
2. Shared and Collaborative Services.....	7
3. Information Technology (IT) & Web Services	15
4. Communications and Marketing.....	20
5. Survey	23
6. Administration	24
Section 3 – Mitigation Strategies	26
Section 4 – Q3 2021-2022 Financial Report	28
Appendix A – Requests for Services Snapshot.....	29
Appendix B – Addresses of Online Learning Centres and Access Points	32
Appendix C – List of Requests for Programs and Courses Not Currently Available (September 1 – December 31, 2021)	57
Appendix D – Social Media Reports	58
Appendix E – List of Communities Served	59

Q3 2021-2022 Interim Report

Contact North | Contact Nord is pleased to present its Q3 2021-2022 Interim Report covering its activities during the period October 1, 2021, to December 31, 2021.

Further Information

Maxim Jean-Louis
President – Chief Executive Officer
Contact North | Contact Nord
705-670-4917
maxim@contactnorth.ca

Section 1 – Contact North | Contact Nord Outcomes – Performance Indicator Snapshot, December 31, 2021

Outcome – Performance Indicator	2021-2022 Target	As of December 31, 2021	% of Target at 75% of Fiscal Year
Requests for Services	1,365,245	1,141,901	84%
Student Course Registrations	62,400	65,134	104%
Communities Served	1,300	1,353	104%
Ontario Works Office Engagement	170	170	100%
Ontario Works Clients Supported	390	227	58%
Registrations from Ontario Works Clients	1,500	1,095	73%
Employment Ontario Office Engagement	188	188	100%
Employment Ontario Clients Supported	1,953	1,309	67%
Registrations from Employment Ontario Clients	10,000	12,558	126%
Calls to IT Technical Hotline	5,000	8,059	162%
Calls to Student Information Hotline	6,480	2,746	42%
Up time on distance delivery platforms	95%	99.8%	105%
Targeted Recruitment Campaigns (formerly educational partner information sessions)	140	36	25%
Users of Portals	392,419	243,474	62%
Pageviews on Portals	1,256,200	1,166,769	93%

Section 2 – How Contact North | Contact Nord Fulfilled the Project Activities in Q3 2021-2022

1. Registration, Advisory Services and Online Learning Centres	
Activity	Interim Report – December 31, 2021
<p>a. Operate and maintain free of charge, high-touch, local support services in English and French to learners and prospective learners that are within the Target Base using its online learning centres and Access Points. Each online learning centre and Access Point will be operated in a manner conducive to academic study and will offer the following free services to the Target Base, to be scaled according to demand:</p> <p>i. The use of distance delivery platforms (including, by way of example only, web and video conferencing platforms) and computers equipped with Internet access (using the highest connection speeds available);</p> <p>ii. Advisory services including, without limitation:</p> <ul style="list-style-type: none"> • assistance with registration in online courses and programs; 	<p>The reopening of Contact North Contact Nord’s online learning centres continued in Q3. As of December 31, 2021, 48 online learning centres were open and supporting students on-site.</p> <p>Based on the local host’s protocols, 41 of the 48 online learning centres were open by appointment only where the client has to call and make an appointment to come into the online learning centre. The remaining seven locations were open without the need for an appointment. The open/close status of the online learning centres is available 24/7 from studyonline.ca / etudiezenligne.ca.</p> <p>On December 21, 2021, Contact North Contact Nord advised all employees that the online learning centres and operations centres will operate virtually for the period January 4, 2022, to January 28, 2022, with a return to the physical locations on January 31, 2022. This decision was taken in the interest of protecting the health and safety of employees and clients and aligned with the direction our public college and university partners were taking to address the spread of COVID-19.</p> <p>As of the date of this report, Contact North Contact Nord reopened 32 online learning centres and both operations centres by appointment only to provide on-site services.</p> <p>To enter Contact North Contact Nord online learning centres, clients and staff must comply with any COVID-19 protocols established by the local host, which may include providing proof of full vaccination. Clients are advised in advance of the host’s COVID-19 protocols and asked to confirm if they cannot comply. If the client cannot comply, they cannot enter the online learning centre. For clients who cannot</p>

1. Registration, Advisory Services and Online Learning Centres

Activity	Interim Report – December 31, 2021
<ul style="list-style-type: none"> • the provision of current information on available online programs and courses; • the provision of current information on educational financial aid options; • referrals to colleges and universities for career and educational mapping; • referrals to other local educational and employment support services; and • moral support and encouragement. <p>iii. Technical support in respect of the use of on-site computers, tools and equipment;</p> <p>iv. A dedicated quiet study space;</p> <p>v. Exam invigilation services (some provided on a cost recovery basis).</p>	<p>enter the online learning centre, Contact North Contact Nord continues to support them virtually by phone, e-mail, Zoom, text messages or Facebook Messenger.</p> <p>Contact North Contact Nord has a comprehensive 14-point COVID-19 health and safety protocol in place to protect the health and safety of employees and clients using the online learning centres. Contact North Contact Nord developed a short, 1 minute, 30 second video that illustrates each of the 14 points. Clients and employees are also required to complete a COVID-19 screening questionnaire prior to entry.</p> <p>Contact North Contact Nord is targeting to have all online learning centres open and fully operational by September 2022.</p> <p>Contact North Contact Nord continues to update its COVID-19 Operational Continuity Plan to reflect the evolving circumstances and any new government public health measures. The corporation’s top priority is protecting the health and safety of its employees, clients and visitors accessing its locations.</p> <p>As of December 31, 2021, no Contact North Contact Nord staff reported having contracted COVID-19.</p> <p><u>Key Outcomes During the Period</u></p> <ul style="list-style-type: none"> • 454,377 Requests for Services fulfilled during the period (See Appendix A for a snapshot). • Generated 15,929 student registrations in online courses with the following breakdown: <ul style="list-style-type: none"> • 4,515 College • 837 University • 488 School Board

1. Registration, Advisory Services and Online Learning Centres	
Activity	Interim Report – December 31, 2021
	<ul style="list-style-type: none"> • 491 Literacy and Basic Skills • 9,598 Training • Of the 15,929 registrations, 13,708 were generated by staff and 2,221 were generated through the use of Contact North Contact Nord’s online learning platforms. • 2,215 support requests to the IT Technical Hotline fulfilled (each support request can take up to 30 minutes to fulfill based on the nature of the request) (included in the 454,377 figure in the first bullet point). <ul style="list-style-type: none"> ○ October 2021: 682 requests ○ November 2021: 850 requests ○ December 2021: 683 requests
b. Secure the facilities for the above-mentioned online learning centres in rent-free space; and	<ul style="list-style-type: none"> • All 116 local online learning centres housed in rent-free space provided by a local community partner. • All partnership agreements for rent-free space up-to-date and managed in a database. • We continue to actively support residents virtually (telephone, e-mail, Zoom, Facebook Messenger) or through one of the 213 access points in communities across Ontario where we provide a smaller number of services. • Our goal is to have all online learning centres reopened and fully operational by September 2022.
c. Staff and operate the Student Information Hotline as defined in Schedule B.	<ul style="list-style-type: none"> • Student Information Hotline staffed during advertised operating hours of 8:00 a.m. to 5:00 p.m. Eastern. • Inquiries received after operating hours responded to the next business day. • Student Information Officers responded to 781 inquiries (each inquiry can take up to 30 minutes to fulfill based on the nature of the inquiry): <ul style="list-style-type: none"> • 339 toll-free number • 253 Live Chat • 189 e-mail inquiries

1. Registration, Advisory Services and Online Learning Centres	
Activity	Interim Report – December 31, 2021
	<ul style="list-style-type: none"> • 0 Facebook Messenger inquiries • Nature of inquiries to Student Information Hotline include: <ul style="list-style-type: none"> • Study options for online programs and courses • Information about Contact North Contact Nord’s services, including contact information for local online learning centres • Information on financial aid options (OSAP, scholarships/bursaries, Second Career) • Registration information, admission requirements, and fee information for online programs and courses • Assistance with registering in an online program or course • Information about exam invigilation service and booking exams • Contact information for colleges and universities
d. Report on the following metrics in accordance with the reporting requirements outlined in Schedule “F”:	<ul style="list-style-type: none"> • See completed table below.

Metric	2021-2022 target	Q1	Q2	Q3	Q4
i. Number of student registrations in online courses and programs directly attributable to the Recipient’s activities and supports	62,400	16,672	32,533	15,929	
ii. Number and nature of requests for services received from the Target Base by the Student Information Hotline	6,480	1,002	963	781	

Metric	2021-2022 target	Q1	Q2	Q3	Q4
iii. User trends and detailed anonymous demographic information for individuals accessing each online learning centre and Access Point	N/A	N/A	N/A	N/A	
iv. Number and addresses of online learning centres and Access Points in operation See Appendix B for addresses of online learning centres and access points.	341	330	330	329	

2. Shared and Collaborative Services	
Activity	Interim Report – December 31, 2021
a. Provide its recruitment and local services as a core shared service;	<ul style="list-style-type: none"> • Recruitment and local support services to students available to Ontario's: <ul style="list-style-type: none"> • 24 public colleges • 23 public universities • 9 Indigenous institutes • 76 district school boards • 200 literacy and basic skills providers • 20 skills development training providers • During the period, 15,929 student course registrations in online courses generated for all categories of providers.
b. Provide Education and Training Providers with data on specific programs and	<ul style="list-style-type: none"> • Two requests received for one online program and one online course not currently available and shared with education and training providers. • See Appendix C for report.

2. Shared and Collaborative Services

Activity	Interim Report – December 31, 2021														
<p>courses not currently available online for which there is learner or labour market demand;</p>															
<p>c. Develop and implement educational partner information sessions in English and French for Educational and Training Providers to maximize course and program registrations from the Target Base;</p>	<ul style="list-style-type: none"> • Six targeted recruitment campaigns (formerly educational partner information sessions) for the following colleges and universities. • Contact North Contact Nord hosts an information session to give the college or university an opportunity to present the online program or course to our recruitment teams and answer any questions. The recruitment teams subsequently launch a targeted recruitment campaign to recruit students from rural and remote communities for the online program or course. <table border="1" data-bbox="709 748 1892 1044"> <thead> <tr> <th data-bbox="709 748 1045 792">College/University</th> <th data-bbox="1045 748 1892 792">Program/Course</th> </tr> </thead> <tbody> <tr> <td data-bbox="709 792 1045 836">Brock University</td> <td data-bbox="1045 792 1892 836">Adult Education, Bachelor of Arts Certificate</td> </tr> <tr> <td data-bbox="709 836 1045 880">CannSell</td> <td data-bbox="1045 836 1892 880">Retail Cannabis training programs</td> </tr> <tr> <td data-bbox="709 880 1045 924">Lighthouse Labs</td> <td data-bbox="1045 880 1892 924">Coding Challenge</td> </tr> <tr> <td data-bbox="709 924 1045 967">Ryerson University</td> <td data-bbox="1045 924 1892 967">Fashion Innovation</td> </tr> <tr> <td data-bbox="709 967 1045 1011">Ryerson University</td> <td data-bbox="1045 967 1892 1011">Indigenous Child & Youth Engagement</td> </tr> <tr> <td data-bbox="709 1011 1045 1044">University of Windsor</td> <td data-bbox="1045 1011 1892 1044">Master of Social Work</td> </tr> </tbody> </table>	College/University	Program/Course	Brock University	Adult Education, Bachelor of Arts Certificate	CannSell	Retail Cannabis training programs	Lighthouse Labs	Coding Challenge	Ryerson University	Fashion Innovation	Ryerson University	Indigenous Child & Youth Engagement	University of Windsor	Master of Social Work
College/University	Program/Course														
Brock University	Adult Education, Bachelor of Arts Certificate														
CannSell	Retail Cannabis training programs														
Lighthouse Labs	Coding Challenge														
Ryerson University	Fashion Innovation														
Ryerson University	Indigenous Child & Youth Engagement														
University of Windsor	Master of Social Work														
<p>d. Engage with those Ontario Works and Employment Ontario offices whose clients include individuals within the Target Base, to promote, advise and facilitate their clients' enrolment into online courses and programs, as appropriate; and</p>	<ul style="list-style-type: none"> • During the period, Contact North Contact Nord engaged with: <ul style="list-style-type: none"> • 170 Ontario Works offices (65 of these offices are in Indigenous communities) • 188 Employment Ontario offices • An “engaged” Ontario Works or Employment Ontario office is a local office that: <ol style="list-style-type: none"> 1) Refers clients who need local access to education and training to the closest Contact North Contact Nord online learning centre for the following eight support services: <ul style="list-style-type: none"> • Assistance with identifying online program and course options to meet the client’s specific education and training needs 														

2. Shared and Collaborative Services	
Activity	Interim Report – December 31, 2021
	<ul style="list-style-type: none"> • Assistance with the registration process for the client’s selected courses • Assistance with information on additional funding options or special needs services from the education and training provider • Use of computer workstations and Internet access to complete coursework in the client’s chosen online programs and courses • Orientation on using the computers at the online learning centre and how to navigate the client’s programs and courses • Use of the web conferencing or videoconferencing platforms to connect to live courses • Exam invigilation service • Reporting on attendance when required by Ontario Works or Employment Ontario (only when consent to share is in place with the client) <p>2) May make space available in their office for Contact North Contact Nord staff to meet directly with their clients to determine how Contact North Contact Nord can support the client with one or more of the services noted in 1) above.</p> <p>3) Receives referrals from Contact North Contact Nord for clients who may need its services (this is primarily referrals to Employment Ontario but also includes additional resources that may be available via Ontario Works for clients entering education or training such as assistance with childcare costs, course/training costs and/or supplies).</p> <p>4) Facilitates consent to share agreement between Ontario Works, Contact North Contact Nord and client and/or Employment Ontario to report on client attendance and course/training programming progress.</p>
e. Provide a suite of free shared services to the Target Base and the Education and Training Providers consisting of the following:	<p><u>3 Shared Service Learning Platforms</u></p> <p>Since 2003, Contact North Contact Nord has offered three shared service learning platforms for Ontario’s 24 public colleges, 23 public universities, 9 Indigenous institutes, 76 district school boards, 200 literacy and basic skills providers, and 20 skills development training providers:</p>

2. Shared and Collaborative Services

Activity	Interim Report – December 31, 2021																		
<ul style="list-style-type: none"> ○ Web conferencing platform; ○ Videoconferencing platform; ○ Moodle Learning Management System; ○ Training for faculty and instructors of the Education and Training Providers in English and French, on use of the Recipient’s technology platforms to deliver their online programs and courses; and ○ Technical support as further described in Project activity 3 (a) (Information Technology (IT) & Web Services) below. 	<ul style="list-style-type: none"> ● Web conferencing (currently Adobe Connect and Zoom) ● Videoconferencing platform ● Moodle Learning Management System <p>Contact North Contact Nord generated 2,221 registrations in 164 courses during the period.</p> <p>Platforms available 99.8% of the time for student use.</p> <p><u>Training for Faculty and Instructors</u></p> <ul style="list-style-type: none"> ● Contact North Contact Nord delivered live training to 73 faculty and instructors during the period on How to Use the Web Conferencing Platform to Teach Effectively (Adobe Connect, BigBlueButton, Zoom). <table border="1" data-bbox="751 883 1486 1395"> <thead> <tr> <th data-bbox="751 883 1314 956">Institution</th> <th data-bbox="1314 883 1486 956">Instructors Trained</th> </tr> </thead> <tbody> <tr> <td data-bbox="751 956 1314 1013">Algonquin College</td> <td data-bbox="1314 956 1486 1013">1</td> </tr> <tr> <td data-bbox="751 1013 1314 1070">Anglican Diocese of Algoma</td> <td data-bbox="1314 1013 1486 1070">1</td> </tr> <tr> <td data-bbox="751 1070 1314 1127">Carleton University</td> <td data-bbox="1314 1070 1486 1127">3</td> </tr> <tr> <td data-bbox="751 1127 1314 1183">Centennial College</td> <td data-bbox="1314 1127 1486 1183">5</td> </tr> <tr> <td data-bbox="751 1183 1314 1240">Collège Boréal</td> <td data-bbox="1314 1183 1486 1240">3</td> </tr> <tr> <td data-bbox="751 1240 1314 1297">Confederation College</td> <td data-bbox="1314 1240 1486 1297">3</td> </tr> <tr> <td data-bbox="751 1297 1314 1354">George Brown College</td> <td data-bbox="1314 1297 1486 1354">17</td> </tr> <tr> <td data-bbox="751 1354 1314 1395">Good Learning Anywhere</td> <td data-bbox="1314 1354 1486 1395">3</td> </tr> </tbody> </table>	Institution	Instructors Trained	Algonquin College	1	Anglican Diocese of Algoma	1	Carleton University	3	Centennial College	5	Collège Boréal	3	Confederation College	3	George Brown College	17	Good Learning Anywhere	3
Institution	Instructors Trained																		
Algonquin College	1																		
Anglican Diocese of Algoma	1																		
Carleton University	3																		
Centennial College	5																		
Collège Boréal	3																		
Confederation College	3																		
George Brown College	17																		
Good Learning Anywhere	3																		

2. Shared and Collaborative Services

Activity	Interim Report – December 31, 2021	
	Lakehead University	5
	Laurentian University	1
	McMaster University	2
	Ministry of the Solicitor General	7
	Mohawk College	7
	Nipissing University	1
	Oshki Pimache-O-Win: The Wenjack Education Institute	2
	Royal Military College	1
	Ryerson University	2
	Seneca College	1
	Université de Hearst	1
	Wilfrid Laurier University	1
	Workplace Safety North	2
	York University	4
	<ul style="list-style-type: none"> • Nine faculty and instructors accessed recordings of Adobe Connect, BigBlueButton, Zoom instructor training sessions during the period. • Nine faculty and instructors requested support for Adobe Connect, BigBlueButton, Zoom by e-mail or telephone. • 1,573 views of the training videos for college, university and Indigenous institute instructors posted to YouTube. • 254 views of training videos for e-Channel instructors posted to YouTube. • 64 web conferencing resources available. 	

2. Shared and Collaborative Services

Activity	Interim Report – December 31, 2021
	<ul style="list-style-type: none">• 11 videoconferencing resources available.• 674 registrations in nine live webinars for faculty and instructors delivered by six world exports as part of the Contact North Contact Nord Webinar Series.<ul style="list-style-type: none">• 531 views of the webinar recordings during the period. <p><u>Technical Support</u></p> <ul style="list-style-type: none">• 2,215 support requests to the IT Technical Hotline fulfilled (each support request can take up to 30 minutes to fulfill based on the nature of the request).• Examples of frequent technical support requests fulfilled from students for Adobe Connect:<ul style="list-style-type: none">• How do I get to my class?• How do I get Adobe Connect installed?• I cannot connect to Adobe Connect/Unable to log in (need credentials)• Where do I find my schedule for my classes?• Don't see my class on my schedule• I need to change my password• I think I am logged into the class, but I don't see anything happening• I am connected but I don't hear anything/they don't hear me when I'm speaking• Where can I find the recording for my class?• Students and instructors may call in to verify if an upcoming new hardware purchase would be compatible with Adobe Connect (for example Chromebook, headset, document camera, tablet stylus)• Examples of frequent technical support requests from instructors using Adobe Connect:<ul style="list-style-type: none">• How can I save the recording? How do I get recordings to my students? Can a class recording be made available offline and where are they stored?• How do I share my presentation?• How do I notify my students of schedule of my classes? Or who will notify the students of new schedule or access?

2. Shared and Collaborative Services

Activity	Interim Report – December 31, 2021
	<ul style="list-style-type: none">• When will my classes show up in my session?• How do I get my classes on your Adobe Connect?• How do I use the Adobe platform?• I don't have Host privileges• Requests to add a teaching assistant to their class and add the appropriate permissions• How do I generate an Adobe Connect Class Student Attendance Report?• How to make a Class Recordings public for guest users? (an instructor may report some of their students are unable to access the class recording URL)• Training on how to use various Adobe Connect pods• Examples of frequent technical support requests from students using Zoom:<ul style="list-style-type: none">• How do I get to my class?• How do I get the Zoom app installed?• I think I am logged into the class, but I don't see anything happening• I am connected but I don't hear anything/they don't hear me when I'm speaking• Examples of frequent technical support requests from faculty using Zoom:<ul style="list-style-type: none">• Request to upgrade a Zoom Basic account to a Zoom Pro account• Assistance with Joining the Contact North Contact Nord Zoom Organization• Comparing application features between Adobe Connect and Zoom for a class lecture• Examples of frequent technical support requests from students using Moodle:<ul style="list-style-type: none">• How do I register for my Moodle classes?• How do I reset my password?• How do I use your platform?• Reporting they are unable to submit an assignment• Reporting sections of their class is missing content (instructor may have not added content)• Examples of frequent technical support requests from faculty using Moodle:

2. Shared and Collaborative Services	
Activity	Interim Report – December 31, 2021
	<ul style="list-style-type: none"> • Reports of students unable to see certain items/content (items may have a setting set to Hide) • Reporting issues with grade reports
f. Report on the following metrics in accordance with the reporting requirements outlined in Schedule “F”:	<ul style="list-style-type: none"> • See completed table on next page.

Metric	2021-2022 target	Q1	Q2	Q3	Q4
i. Number of Ontario Works referral partners engaged	170	170	170	170	
ii. Number of Employment Ontario referral partners engaged	188	188	188	188	
iii. Number of Ontario Works clients supported	390	106	72	49	
iv. Number of Employment Ontario clients supported	1,953	615	396	298	
v. Number of online course and program registrations by Ontario Works clients	1,500	384	383	328	
vi. Number of online course and program registrations by Employment Ontario clients	10,000	3,644	4,575	4,339	
vii. Number of courses supported on the Recipient’s shared technology platforms	1,652	435	718	164	

Metric	2021-2022 target	Q1	Q2	Q3	Q4
viii. Number of faculty and instructors trained on the use of the Recipient's online delivery tools and resources	500	7	45	73	
ix. Number and descriptions of education partner information sessions organized for education and training providers	140	23	7	4	

3. Information Technology (IT) & Web Services

Activity	Interim Report – December 31, 2021
i. Provide technical support services in English and French from 7:30 a.m. to 10:30 p.m. Eastern Standard Time, Monday to Friday, for all of the Recipient's information technology resources used by students, faculty, instructors and any other stakeholders, as required;	<ul style="list-style-type: none"> • Technical support provided for students, faculty, instructors from Ontario's 24 public colleges, 23 public universities, 9 Indigenous institutes, 76 district school boards, 200 literacy and basic skills providers, and 20 skills development training providers and other stakeholders as required during the advertised time during the period. • 2,215 support requests to the IT Technical Hotline fulfilled (each support request can take up to 30 minutes to fulfill based on the nature of the request). <ul style="list-style-type: none"> • Examples of frequent technical support requests fulfilled from students for Adobe Connect: <ul style="list-style-type: none"> • How do I get to my class? • How do I get Adobe Connect installed? • I cannot connect to Adobe Connect/Unable to log in (need credentials) • Where do I find my schedule for my classes? • Don't see my class on my schedule • I need to change my password • I think I am logged into the class, but I don't see anything happening

3. Information Technology (IT) & Web Services

Activity	Interim Report – December 31, 2021
	<ul style="list-style-type: none">• I am connected but I don't hear anything/they don't hear me when I'm speaking• Where can I find the recording for my class?• Students and instructors may call in to verify if an upcoming new hardware purchase would be compatible with Adobe Connect (for example Chromebook, headset, document camera, tablet stylus)• Examples of frequent technical support requests from instructors using Adobe Connect:<ul style="list-style-type: none">• How can I save the recording? How do I get recordings to my students? Can a class recording be made available offline and where are they stored?• How do I share my presentation?• How do I notify my students of schedule of my classes? Or who will notify the students of new schedule or access?• When will my classes show up in my session?• How do I get my classes on your Adobe Connect?• How do I use the Adobe platform?• I don't have Host privileges• Requests to add a teaching assistant to their class and add the appropriate permissions• How do I generate an Adobe Connect Class Student Attendance Report?• How to make a Class Recordings public for guest users? (an instructor may report some of their students are unable to access the class recording URL)• Training on how to use various Adobe Connect pods• Examples of frequent technical support requests from students using Zoom:<ul style="list-style-type: none">• How do I get to my class?• How do I get the Zoom app installed?• I think I am logged into the class, but I don't see anything happening

3. Information Technology (IT) & Web Services

Activity	Interim Report – December 31, 2021
	<ul style="list-style-type: none"> • I am connected but I don't hear anything/they don't hear me when I'm speaking • Examples of frequent technical support requests from faculty using Zoom: <ul style="list-style-type: none"> • Request to upgrade a Zoom Basic account to a Zoom Pro account • Assistance with Joining the Contact North Contact Nord Zoom Organization • Comparing application features between Adobe Connect and Zoom for a class lecture • Examples of frequent technical support requests from students using Moodle: <ul style="list-style-type: none"> • How do I register for my Moodle classes? • How do I reset my password? • How do I use your platform? • Reporting they are unable to submit an assignment • Reporting sections of their class is missing content (instructor may have not added content) • Examples of frequent technical support requests from faculty using Moodle: <ul style="list-style-type: none"> • Reports of students unable to see certain items/content (items may have a setting set to Hide) • Reporting issues with grade reports
<p>ii. Manage and maintain the Recipient's online portals and websites. The Recipient will ensure that the information presented on each of its online portals and websites remains current and up-to-date at all times.</p>	<ul style="list-style-type: none"> • Three Contact North Contact Nord portals (English and French) available during the period for student and general public use. • During the period, 90,772 users generated 473,982 pageviews on portals: <ul style="list-style-type: none"> ○ 48,524 users generated 400,595 pageviews on studyonline.ca / etudiezenligne.ca. ○ 36,317 users generated 62,948 pageviews on contactnorth.ca / contactnord.ca.

3. Information Technology (IT) & Web Services

Activity	Interim Report – December 31, 2021
	<ul style="list-style-type: none"> ○ 5,931 users generated 10,439 pageviews on e-channel.ca / apprentissageenligne.ca. ● Collection of online program and course information during the period for the Winter 2022 and Spring/Summer 2022 academic semesters for posting to studyonline.ca / etudiezenligne.ca. ● Collection of information on short courses and micro-credential programs and courses from Ontario’s colleges, universities, and Indigenous institutes for inclusion in the search tool on studyonline.ca / etudiezenligne.ca. ● Updating current information is an ongoing process to ensure portal is current and up to date. ● Portals monitored continuously throughout the period to ensure posted content is current and up to date.
<p>iii. Manage, maintain and ensure the security, performance, stability and reliability of the Recipient’s information technology infrastructure, including without limitation, Internet connectivity, telecommunications, hardware, software, web conferencing and videoconferencing platforms, and the Moodle learning management system;</p>	<ul style="list-style-type: none"> ● All information technology infrastructure managed appropriately during the period to ensure high quality services delivered for students and education and training providers.
<p>iv. Undertake to deliver uninterrupted services (i.e., less than 5% downtime during service hours) in connection with the IT and Web Service resources utilized by students, faculty,</p>	<ul style="list-style-type: none"> ● Contact North Contact Nord reported 99.8% uptime on its services during the period. ● Transition of the major business systems to the cloud in 2019-2020 supported the delivery of external (students, education, and training providers) and internal (staff) support services during the closure of the operations centres and online learning centres during the period.

3. Information Technology (IT) & Web Services	
Activity	Interim Report – December 31, 2021
instructors, staff, and other stakeholders to whom the Recipient is providing its services;	
v. Continually enhance broadband Internet access at online learning centres as service becomes available/improved in Target Base communities; and	<ul style="list-style-type: none"> No upgrades during the period.
vi. Develop, manage and maintain the Information Technology (IT) and communications infrastructure necessary to perform the Project activities described in this Agreement and to meet the objectives and obligations (including, without limitation, its reporting obligations) set out herein.	<ul style="list-style-type: none"> All IT and communications infrastructure managed and maintained during the period to perform Project activities, including reporting requirements.
vii. Report on the following metrics in accordance with the reporting requirements outlined in Schedule “F”:	<ul style="list-style-type: none"> See completed table below.

Metric	2021-2022 target	Q1	Q2	Q3	Q4
Number and nature of IT support requests fulfilled; and	5,000	3,234	2,610	2,215	
Up time on distance delivery platforms per operating system reports	95%	99.4%	99.9%	99.8%	

4. Communications and Marketing	
Activity	Interim Report – September 30, 2021
i. Develop and implement strategies to maximize student registrations in online programs and courses offered by the Education and Training Providers to the Target Base;	<p>During the period, Contact North Contact Nord undertook the following strategies:</p> <ul style="list-style-type: none"> • Continuous marketing and promotion of available online programs and courses in the 1,300+ small, remote, rural, Indigenous and Francophone communities. These communities are served via local recruitment activities by staff in 116 local online learning centres, via the province-wide Student Information Hotline, and its studyonline.ca / etudiezenligne.ca and e-channel.ca / apprentissageenligne.ca portals for students and prospective students. • Executed four targeted recruitment campaigns during the period.
ii. Develop and implement marketing and communication strategies to enhance and promote awareness of the Recipient’s services within the Target Base using a combination of traditional and digital media platforms (e.g., social media, Google Ads, radio, print, etc.);	<ul style="list-style-type: none"> • Used Google Adwords to drive traffic to the studyonline.ca / etudiezenligne.ca portal for students and prospective students. <ul style="list-style-type: none"> ○ During the period, 48,524 users generated 400,595 pageviews on both portals • Corporate Facebook page maintained to engage with students and prospective students. • Corporate Twitter page maintained to engage with students and prospective students. • Corporate LinkedIn page maintained to engage with students and prospective students. <p>See Appendix D for the quarterly report on social media activity.</p>
iii. Provide information about its services to current and prospective learners within the Target Base and to its Education and Training Providers;	<ul style="list-style-type: none"> • Contact North Contact Nord engages with 4,282 local organizations across Ontario to recruit and support underserved Ontarians.

4. Communications and Marketing	
Activity	Interim Report – September 30, 2021
iv. Engage with stakeholders on the Recipient’s activities and strategic direction;	<ul style="list-style-type: none"> • During the period, Contact North Contact Nord provided regular updates to its stakeholders on activities and strategic directions, including: <ul style="list-style-type: none"> ○ Ontario’s education and training providers ○ Local partners who host the 114 local online learning centres and 213 access points ○ Provincial and local decision-makers
v. Track and analyze the results of marketing campaigns including, without limitation, engagement and conversion metrics related to its social media and digital marketing initiatives; and	<ul style="list-style-type: none"> • During the period, 48,524 users generated 400,595 pageviews on the studyonline.ca / etudiezenligne.ca portals for students and prospective students. • During the period, 5,931 users generated 10,439 pageviews on e-channel.ca / apprentissageenligne.ca portal for students and prospective students. • See Appendix D for the quarterly report on social media activity.
vi. Adhere to the public communications protocol with the Province attached as Schedule “H”.	<ul style="list-style-type: none"> • All communications protocols adhered to.
vii. Report on the following metrics in accordance with the reporting requirements outlined in Schedule “F”: <ul style="list-style-type: none"> i. Social media reach and engagement metrics supported by reports issued by each platform provider; ii. Conversion and engagement metrics for each media campaign; and 	<ul style="list-style-type: none"> • See Appendix D for the quarterly report on social media activity. • During the period, 48,524 users generated 400,595 pageviews on the studyonline.ca / etudiezenligne.ca portals for students and prospective students. • During the period, 5,931 users generated 10,439 pageviews on e-channel.ca / apprentissageenligne.ca portal for students and prospective students.

4. Communications and Marketing	
Activity	Interim Report – September 30, 2021
iii. Detailed web traffic stats (categorized by site).	

5. Survey	
Activity	Interim Report December 31, 2021
<p>a. Engage a third party to conduct a survey to assess and evaluate the impact of the Recipient’s services on its clients’ academic program completion rates and employment rates; and</p>	<ul style="list-style-type: none"> • Independent expert firm to be engaged in April 2022 to complete 2021-2022 outcomes survey.
<p>b. Report on the following metrics in accordance with the reporting requirements outlined in Schedule “F”:</p> <p>i. Survey results demonstrating the direct impact of the Recipient’s services on its clients’ academic program completion rates of clients using its services within the Target Base; and</p> <p>ii. Survey results demonstrating the direct impact of the Recipient’s services on its clients’ employment rates</p>	<ul style="list-style-type: none"> • Metrics to be reported upon completion of the 2021-2022 outcomes survey in the 2021-2022 Performance Report.

6. Administration

Activity	Interim Report – December 31, 2021
<p>a. Staff, office space rentals in respect of its Sudbury and Thunder Bay Operations Centres, and appropriate equipment and technology to support its operations;</p>	<p><u>Staff</u></p> <ul style="list-style-type: none"> As of December 31, 2021, Contact North Contact Nord had 50 open recruitment processes, 45 of which are for key front-line staff, including Education & Training Advisors, Education & Training Representatives and Student Recruitment & Services Representatives in communities where recruiting staff is challenging. <p><u>Operations Centres</u></p> <ul style="list-style-type: none"> Leases in place for the Sudbury Operations Centre (expiry February 28, 2023, with option to renew for five additional years) and Thunder Bay Operations Centre (expiry November 30, 2022, with option to renew for five additional years). The Sudbury Operations Centre open during the period. The Thunder Bay Operations Centre open during the period. <p><u>Appropriate Equipment and Technology</u></p> <ul style="list-style-type: none"> All appropriate equipment in place for efficient operation of both operations centres, including during the COVID-19 closure. With the approval of the Director, IT, Web Services & Organizational Development, IT & Web Services staff have access to both operations centres to perform any tasks that cannot be performed remotely.
<p>b. Travel, meal and hospitality expenditures for staff and members of the Board of Directors across all categories set out in the Budget (Schedule “D”), are subject to the following:</p>	<ul style="list-style-type: none"> All travel expenditures for staff and members of the Board of Directors directly attributable to and necessary for achieving the objectives of the Project and incurred in accordance with Contact North Contact Nord Financial Policy. The Financial Policy, approved by the Contact North Contact Nord Board of Directors, meets the requirements of the Broader Public Sector Expenses Directive, 2020.

6. Administration	
Activity	Interim Report – December 31, 2021
<p>i. The Recipient will develop and adhere to financial management policies for travel, meal, and hospitality expenses that meet the requirements under the <i>Broader Public Sector Expenses Directive, 2020</i> effective January 1, 2020, including adhering to the principles of this directive; and</p> <p>ii. The Recipient will exercise restraint in the expenditure of Funds for the purposes of travel, meal and hospitality expenses.</p>	<ul style="list-style-type: none"> • In applying Contact North Contact Nord policy, staff apply appropriate conflict of interest rules that reflect the spirit of Regulation 381/07 of the <i>Public Service of Ontario Act, 2006</i>.
<p>c. Professional services (i.e., financial, legal, procurement, consulting, web hosting, etc.);</p>	<ul style="list-style-type: none"> • Professional services acquired in accordance with Contact North Contact Nord Financial Policy as required to support its operations.
<p>d. Administration necessary to carry out the Project work and to meet the reporting obligations set out herein.</p>	<ul style="list-style-type: none"> • Completed administration necessary to meet the project objectives and reporting requirements in accordance with internally developed policies. • Audio briefing on operations with the Chair of the Board of Directors on a regular basis. • Quarterly meeting of the Board of Directors on December 7, 2021. • Weekly Updates by each member of the operations and management team on their respective deliverables. • Daily updates on operations by front-end recruitment and service departments. • Operations Team met daily at 9:00 a.m. to address any operational issues.

Section 3 – Mitigation Strategies

Contact North | Contact Nord reviewed the Q3 results against the outcomes and performance measurements in the 2021-2022 Transfer Payment Agreement and its internal performance indicators.

Outcome – Performance Indicator	2021-2022 Target	Q1 Result	Q2 Result	Q3 Result	Q4 Result	Total Q1-Q4 (if applicable)	% of Target at 50% of Fiscal Year	Mitigation Strategies
Requests for Services	1,365,245	318,692	368,832	454,377		1,141,901	84%	No mitigation strategies required.
Student Course Registrations	62,400	16,672	32,533	15,929		65,134	104%	No mitigation strategies required. Data collection is not complete for Fall 2021 semester.
Communities Served	1,300	1,353	1,353	1,353		1,353	104%	No mitigation strategies required.
Number of Online Learning Centres and Access Points	341	330	330	329		330	97%	The number of access points reduced to 213 due to permanent closure of the location.
Ontario Works Office Engagement	170	170	170	170		170	100%	No mitigation strategies required.
Ontario Works Clients Supported	390	106	72	49		227	58%	No mitigation strategies required.
Registrations from Ontario Works Clients	1,500	384	383	328		1,095	73%	No mitigation strategies required.
Employment Ontario Office Engagement	188	188	188	188		188	100%	No mitigation strategies required.
Employment Ontario Clients Supported	1,953	615	396	298		1,309	67%	No mitigation strategies required.

Outcome – Performance Indicator	2021-2022 Target	Q1 Result	Q2 Result	Q3 Result	Q4 Result	Total Q1-Q4 (if applicable)	% of Target at 50% of Fiscal Year	Mitigation Strategies
Registrations from Employment Ontario Clients	10,000	3,644	4,575	4,339		12,558	126%	No mitigation strategies required.
Calls to IT Technical Hotline	5,000	3,234	2,610	2,215		8,059	161%	Continued support to Algoma University resulting in higher call volumes.
Up time on distance delivery platforms	95%	99.4%	99.9%	99.8%		99.7%	105%	No mitigation strategies required.
Calls to Student Information Hotline	6,480	1,002	963	781		2,746	42%	Calls to the Student Information Hotline continue to be impacted by smaller number of exams invigilated.
Targeted Recruitment Campaigns (formerly partner information sessions)	140	23	7	6		36	25%	Colleges and universities are not engaging in the Targeted Recruitment Campaign process.
Users of Portals	392,419	78,468	74,234	90,772		243,474	62%	No mitigation strategies required.
Pageviews on Portals	1,256,200	301,086	391,701	473,982		1,166,769	93%	No mitigation strategies required.

Section 4 – Q3 2021-2022 Financial Report

Contact North | Contact Nord
Ministry of Colleges and Universities Funding Financial Report
at December 31, 2021

	Budget	Revised Budget ¹	Year-to-Date Actual	YTD %	Projection to Year-End	Variance	% Var
Revenue							
Base Grant	\$ 9,751,469	\$ 9,751,469	\$ 9,751,469	100%	\$ 9,751,469	\$ -	
Total Revenue	\$ 9,751,469	\$ 9,751,469	\$ 9,751,469	100%	\$ 9,751,469	\$ -	0%
Expenditures							
Recruitment & Student Services							
Regional Services and Online Learning Centres	\$ 4,046,624	\$ 4,096,624	\$ 2,706,467	67%	\$ 4,083,936	\$ (12,688)	0%
Recruitment & Marketing	657,471	657,471	500,327	76%	664,284	6,813	1%
Recruitment Support Services	849,039	849,039	554,342	65%	814,537	(34,502)	-4%
Travel (direct)	154,168	104,168	61,222	40%	84,283	(19,885)	-19%
Total Recruitment & Student Services	\$ 5,707,301	\$ 5,707,301	\$ 3,822,358	67%	\$ 5,647,039	\$ (60,262)	-1%
Information, Technology, Web & e-Learning Support Services							
IT, Web & e-Learning Support	\$ 1,940,541	\$ 1,990,541	\$ 1,496,215	77%	\$ 2,017,755	\$ 27,214	1%
Equipment Renewal and Upgrading	200,000	200,000	62,240	31%	270,723	70,723	35%
Travel (direct)	71,800	21,800	1,157	2%	4,800	(17,000)	-78%
Information, Technology, Web & e-Learning Support Services	\$ 2,212,341	\$ 2,212,341	\$ 1,559,612	70%	\$ 2,293,278	\$ 80,937	4%
Operations Support Services							
Regional Operations Centres	\$ 884,363	\$ 884,363	\$ 636,525	72%	\$ 888,012	\$ 3,648	0%
Travel (direct)	-	-	-	-	-	-	-
Total Operations Support Services	\$ 884,363	\$ 884,363	\$ 636,525	72%	\$ 888,012	\$ 3,648	0%
Governance & Administration							
Finance & Human Resources	\$ 605,186	\$ 605,186	\$ 435,183	72%	\$ 607,775	\$ 2,589	0%
Governance & CEO	295,277	295,277	193,961	66%	268,365	(26,912)	-9%
Travel & Hospitality (indirect)	47,000	47,000	29,320	62%	47,000	0	0%
Total Governance & Administration	\$ 947,463	\$ 947,463	\$ 658,464	69%	\$ 923,140	\$ (24,323)	-3%
Total Expenditures	\$ 9,751,469	\$ 9,751,469	\$ 6,676,960	68%	\$ 9,751,469	\$ (0)	
Surplus or (shortfall)	\$ -	\$ -	\$ 3,074,509		\$ -	\$ -	

¹ Revised per request to reallocate funds dated October 29, 2021

Appendix A – Requests for Services Snapshot

Summary of Contact North | Contact Nord Request for Services

Service	Description	Number of Requests Q1	Number of Requests Q2	Number of Requests Q3	Number of Requests Q4	2021-2022	Source of Data
Requests Responded to at Online Learning Centres and Operations Centres							
Exam Invigilations	Number of exams invigilated at online learning centres and Operations Centres.	21	32	144		197	CN CN CRM
Student Interactions	Number of student appointments recorded by Online Learning Recruitment Officers and Student Recruitment & Services Representatives in the CRM to provide information, present study options, provide orientations, provide referrals, follow-ups on information provided.	48,680	42,898	33,681		125,259	CN CN CRM
Influencer Interactions	Number of influencer appointments recorded by Online Learning Recruitment Officers in the CRM such as presentations to groups of prospective students, information sessions with prospective referral partners, and networking events.	3,602	3,088	3,207		9,897	CN CN CRM
Course Work Appointments	Number of appointments for students to use computers and Internet access at online learning centres to complete their coursework and use of web conferencing, videoconferencing and audioconferencing platforms to connect to their courses.	0	150	494		644	CN CN CRM
Inquiries at Online Learning Centres	Number of telephone calls, e-mails, walk-ins and mail-ins received at the online learning centres requesting a service not recorded under one of the other categories in the CRM.	2,191	1,906	1,977		6,074	Internal Tracking
	Sub Total	54,494	48,074	39,503	0	142,071	
Requests Responded to Centrally							
Student Information Hotline Inquiries	Number of inquiries (toll-free, e-mail, live chat, walk-in) to the Student Information Hotline.	1,002	963	781		2,746	Internal Tracking
Online Booking Tool (OBT) Bookings for the Use of Web Conferencing, Videoconferencing and Audioconferencing Platforms and Requests for Changes to Bookings	The number of bookings for the use of CN CN's 3 distance delivery platforms (web conferencing, videoconferencing and audioconferencing) by education and training providers and the number of changes to bookings processed.	755	1,927	765		3,447	CN CN OBT
Technical Support Hotline	Number of support inquiries to the Technical Support Hotline.	3,234	2,610	2,215		8,059	HelpDesk Software

Summary of Contact North | Contact Nord Request for Services

Service	Description	Number of Requests Q1	Number of Requests Q2	Number of Requests Q3	Number of Requests Q4	2021-2022	Source of Data
Targeted Recruitment Campaigns (formerly education partner information sessions)	Number of targeted recruitment campaigns undertaken by CN CN to generate awareness of, and registrations in, specific online programs and courses for public colleges and universities. Campaigns executed by Online Learning Recruitment Officers in communities across Ontario for one month with detailed reports submitted to college or university partner.	23	7	6		36	Internal Tracking
Requests for Instructor Training	Number of requests received for web conferencing training for instructors at colleges, universities, Indigenous institutes, school boards, literacy and basic skills providers and other training providers.	6	45	73		124	Internal Tracking
	Sub Total	5,020	5,552	3,838	0	14,410	
Requests Responded to via Portals							
Pageviews 1	Number of unique views of pages on studyonline.ca/etudiezenligne.ca providing services to students and prospective students such as requesting information on programs or courses through a search in the database, information on services available at online learning centres/where they are located or information on support services from colleges and universities. Google Analytics provides a list of the cities and towns the users viewing the pages are located in and the number of users per city or town.	247,016	304,153	400,595		951,764	Google Analytics
Pageviews 2	Number of unique views to pages on e-channel.ca providing services to students and prospective students such as requesting information on programs or courses through a search, information on services available at online learning centres/where they are located or information on support services from literacy and basic skills providers. Google Analytics provides a list of the cities and towns the users viewing the pages are located in and the number of users per city or town.	12,162	11,053	10,439		33,654	Google Analytics
	Sub Total	259,178	315,206	411,034	0	985,418	
	Total Requests for Services	318,692	368,832	454,375	0	1,141,899	
% of Target of 1,365,245 at 75% of Fiscal Year						84%	

Appendix B – Addresses of Online Learning Centres and Access Points

Addresses for Online Learning Centres

No.	Community Name	Street Address/City
1	Akwesasne	25 Third Street Akwesasne, QC H0M 1A0
2	Astorville	No Current Physical Location
3	Atikokan	324 Mercury Avenue Atikokan, ON P0T 1C0
4	Attawapiskat First Nation	Aboriginal Community Development Office Attawapiskat, ON P0L 1A0
5	Bear Island First Nation	No Current Physical Location
6	Beardmore	No Current Physical Location
7	Big Grassy First Nation	509 Beach Road Morson, ON P0W 1J0
8	Big Trout Lake First Nation	No Current Physical Location
9	Blind River	No Current Physical Location
10	Bonfield	No Current Physical Location
11	Bracebridge	169 Pine Street Bracebridge, ON P1L 2H8
12	Brantford	411 Elgin Street Brantford, ON N3S 7P5
13	Bruce Mines	No Current Physical Location
14	Chapleau	4 Maple Street Chapleau, ON P0M 1K0
15	Clinton	169 Beech Street Clinton, ON N0M 1L0
16	Cobalt	No Current Physical Location
17	Cobourg	600 William Street Cobourg, ON K9A 3A5
18	Cochrane	171 Fourth Avenue Cochrane, ON P0L 1C0
19	Constance Lake First Nation	5 Amik Street Constance Lake, ON P0L 1B0
20	Cornwall	2 St. Lawrence Drive Cornwall, ON K6H 4Z1
21	Dokis First Nation	930 Main Street Dokis First Nation, ON P0M 2N1
22	Dryden	100 Casimir Avenue Dryden, ON P8N 3L4
23	Dubreuilville	No Current Physical Location
24	Ear Falls	No Current Physical Location
25	Earlton	No Current Physical Location
26	Elk Lake	No Current Physical Location

No.	Community Name	Street Address/City
27	Elliot Lake	10 Paris Drive Elliot Lake, ON P5A 2L9
28	Emo	No Current Physical Location
29	Englehart	80 Seventh Avenue Englehart, ON POJ 1H0
30	Espanola	147-2 Spruce Street Espanola, ON P5E 1S6
31	Fort Frances	675 Flinders Avenue Fort Frances, ON P9A 3L2
32	Georgina	17-443 The Queensway South Georgina, ON L4P 3J4
33	Geraldton	500 Second Street West Geraldton, ON POT 1M0
34	Ginoogaming First Nation	101 Poplar Crescent Longlac, ON POT 2A0
35	Gogama	No Current Physical Location
36	Gore Bay	70 Meredith Street Gore Bay, ON POP 1H0
37	Haileybury	640 Latchford Street Haileybury, ON POJ 1K0
38	Haliburton	2-49 Maple Avenue Haliburton, ON KOM 1S0
39	Hawkesbury	570 Kitchener Street Hawkesbury, ON K6A 2P3
40	Hearst	3 15th Street Hearst, ON POL 1N0
41	Ignace	312 Pine Street Ignace, ON POT 1T0
42	Iroquois Falls	44 Anson Drive Iroquois Falls, ON POK 1E0
43	Kapuskasing	7 Aurora Street Kapuskasing, ON P5N 1J6
44	Kenora	900 Golf Course Road Kenora, ON P9N 3X7
45	Kincardine	385 Queen Street Kincardine, ON N2Z 2R4
46	Kirkland Lake	140 Government Road East Kirkland Lake, ON P2N 3L1
47	Latchford	No Current Physical Location
48	Longlac	98 Indian Road Longlac, ON POT 2A0
49	M'Chigeeng First Nation	374 Highway 551 M'Chigeeng, ON POP 1G0
50	Madoc	7 Hill Avenue

No.	Community Name	Street Address/City
		Madoc, ON K0K 2K0
51	Magnetawan First Nation	No Current Physical Location
52	Manitouwadge	200 Manitou Road West Manitouwadge, ON P0T 2C0
53	Marathon	2 Ontario Street Marathon, ON P0T 2E0
54	Massey	No Current Physical Location
55	Matachewan First Nation	No Current Physical Location
56	Matheson	No Current Physical Location
57	Mattawa	370 Pine Street Mattawa, ON P0H 1V0
58	Mississauga First Nation	148 Village Road Blind River, ON P0R 1B0
59	Mississaugas of the New Credit First Nation	No Current Physical Location
60	Moose Cree First Nation	25 Pedabun Road Moose Factory Island, ON P0L 1W0
61	Moosonee	13 First Street Moosonee, ON P0L 1Y0
62	Nakina	115 Quebec Street Nakina, ON P0T 2H0
63	Nipigon	No Current Physical Location
64	Nipissing First Nation	36 Semo Road Garden Village, ON P2B 3K2
65	Noëlville	No Current Physical Location
66	Nolalu	No Current Physical Location
67	North Bay	60 Commerce Crescent North Bay, ON P1B 8G4
68	North Caribou Lake First Nation	North Caribou Lake Education Authority Weagamow Lake, ON P0V 2Y0
69	Onaping	No Current Physical Location
70	Orléans	240 Centrum Boulevard Orléans, ON K1E 3J4
71	Parry Sound	1 College Drive Parry Sound, ON P2A 0A9
72	Pic Mobert First Nation	209 Second Street Pic Mobert, ON P0M 2J0
73	Pic River First Nation	No Current Physical Location
74	Pickle Lake	No Current Physical Location
75	Rainy River	1 Mill Street Rainy River, ON P0W 1L0
76	Ramore	No Current Physical Location

No.	Community Name	Street Address/City
77	Red Lake	60B Highway 105 Red Lake, ON POV 2M0
78	Red Rock	46 Salls Street Red Rock, ON POT 2P0
79	Red Rock Indian Band	2 Gas Road Lake Helen Reserve, ON POT 2J0
80	Richards Landing	No Current Physical Location
81	Rocky Bay First Nation	No Current Physical Location
82	Sagamok First Nation	No Current Physical Location
83	Sandy Lake First Nation	Gabbius Goodman Memorial Learning Centre Sandy Lake, ON POV 1V0
84	Sault Ste. Marie	443 Northern Avenue Sault Ste. Marie, ON P6B 4J3
85	Schreiber	No Current Physical Location
86	Serpent River First Nation	No Current Physical Location
87	Shelburne	167 Centre Street Shelburne, ON L9V 3R8
88	Sioux Lookout	86-B Third Avenue Sioux Lookout, ON P8T 0A9
89	Six Nations First Nation	No Current Physical Location
90	Smooth Rock Falls	105 2nd Avenue Smooth Rock Falls, ON POL 2B0
91	South Porcupine	4715 Highway 101 East South Porcupine, ON PON 1H0
92	South River	324 Highway 124 South River, ON POA 1X0
93	Spanish	No Current Physical Location
94	St. Catharines	285 Bunting Road St. Catharines, ON L2M 7T9
95	St. Charles	22 Ste-Anne Street St. Charles, ON POM 2W0
96	St. Thomas	417 Wellington Street St. Thomas, ON N5R 5J5
97	Stratford	No Current Physical Location
98	Sturgeon Falls	96 Main Street Sturgeon Falls, ON P2B 1N3
99	Sudbury	410 Falconbridge Road Sudbury, ON P3A 4S4
100	Summer Beaver First Nation	No Current Physical Location
101	Temagami	No Current Physical Location
102	Terrace Bay	19 Hudson Drive Terrace Bay, ON POT 2W0

No.	Community Name	Street Address/City
103	Thessalon First Nation	40 Sugarbush Road Thessalon, ON P0R 1L0
104	Thorne	No Current Physical Location
105	Thunder Bay	1139 Alloy Drive Thunder Bay, ON P7B 6M8
106	Virginiatown	No Current Physical Location
107	Wahgoshig First Nation	No Current Physical Location
108	Wallaceburg	1416 Dufferin Avenue Wallaceburg, ON N8A 2W5
109	Warren	No Current Physical Location
110	Wasauksing First Nation	No Current Physical Location
111	Wawa	3 Boyer Street Wawa, ON P0S 1K0
112	White River	610 Elgin Street White River, ON P0M 3G0
113	Wikwemikong First Nation	34 Henry Street Wikwemikong, ON P0P 2J0
114	Windsor	1643 McDougall Street Windsor, ON N8X 3M9
115	Woodstock	40 Metcalfe Street Woodstock, ON N4S 3E7
116	Wunnumin Lake First Nation	No Current Physical Location

Addresses for Access Points

No.	Community of Access Point	Organization Name and Address
1	Ailsa Craig	Craigwood Youth Services 520 Hamilton Rd, London, ON N5Z 1S4
2	Ajax	VPI Working Solutions 289 Kingston Road E #2 Ajax, ON L1Z 0K5
3	Akwesasne	Akwesasne Career & Support Services 25 3e Rue Le Haut-Saint-Laurent, QC H0M1A0
4	Akwesasne	Iohahi:io Akwesasne Adult Education Centre 16 Iohahiio Rd No. 15 Hogansburg, QC H0M 1A1
5	Alderville First Nation	Alderville First Nation, Ontario Works PO Box 12 Roseneath, ON K0K 2X0
6	Alexandria	Glengarry Inter-Agency Group 580 Main St, S Alexandria, ON K0C 1A0
7	Alexandria	TR Leger 212 Main St, N Alexandria, ON K0C 1A0
8	Algonquin Highlands	Haliburton Public Library - Stanhope Branch 1109 North Shore Road Algonquin Highlands, ON K0M 1J0
9	Alliston	FOCUS Community Development Corp. 46 Wellington St W Alliston, ON L9R 2B8
10	Alliston	New Tecumseth Public Library 17 Victoria St E Alliston, ON L9R 1V6
11	Alliston	Ontario Works - Simcoe County 39 Victoria St E Alliston, ON L9R 1T3

No.	Community of Access Point	Organization Name and Address
12	Alliston	The Learning Centre -Simcoe County District School Board 46 Wellington St W Unit 3 Alliston, ON L9R 2B8
13	Angus	FOCUS Community Development Corp - Angus 199 Mill St Angus, ON L0M 1B2
14	Aurora	Addiction Services of York Region 14785 Yonge St Unit 210, Aurora, ON L4G 1N1
15	Aurora	York Support Service Network (Mental Health Division) 240 Edward St Unit 3, Aurora, ON L4G 3S9
16	Barrie	Canadian Mental Health Association Outreach Office 15 Bradford St, Barrie, ON L4N 1W2
17	Barrie	La Clé 2 Marsellus Dr, Barrie, ON L4N 0Y4
18	Barrie	Ontario Disability Support Program 34 Simcoe St, Barrie, ON L4N 6T4
19	Barrie	Ontario Works 136 Bayfield St., 4th Floor Barrie, ON L4M 3B1
20	Beamsville	Employment Help Centre 4520 Ontario St #11, Beamsville, ON L0R 1B5
21	Blind River	Blind River Public Library 8 Woodward Avenue Blind River, ON P0R 1B0
22	Bobcaygeon	Kawartha Lakes Public Library 21 Canal St, E Bobcaygeon, ON K0M 1A0

No.	Community of Access Point	Organization Name and Address
23	Bracebridge	YWCA of Muskoka 440 Ecclestone Dr, Bracebridge, ON P1L 1Z6
24	Bradford	Bradford Public Library 425 Holland St W, Bradford, ON L3Z 0J2
25	Bradford	Bradford Works and Employment Ontario 95 Holland St W #105, Bradford, ON L3Z 2A7
26	Brampton	Brampton Library 150 Central Park Dr Brampton, ON L6T 1B4
27	Brantford	Brant Skills 225 Fairview Dr #1 Brantford, ON N3R 7E3
28	Brantford	Brantford Public Library 173 Colborne St, Brantford, ON N3T 2G8
29	Brantford	Community Employment Services 1100 Clarence St, S #202 Brantford, ON N3S 7N8
30	Brantford	Grand Erie District School Board Grand Erie Learning Alternatives - Brantford Campus 365 Rawdon Street N3S 6J3
31	Brantford	Grand Erie District School Board Grand Erie Learning Centre - City Centre Campus 1 Market St, First Level Brantford, ON N3T 6C8
32	Brantford	Margots Place 50 Chestnut Ave Brantford, ON N3T 4C2
33	Brantford	St Leonard's Community Services 133 Elgin St, Brantford, ON N3S 5A4

No.	Community of Access Point	Organization Name and Address
34	Brantford	YMCA Immigrant & Newcomer Services 38 Darling St., Suite 201 Brantford, ON N3T 6A8
35	Brockville	Employment Education Centre 105 Strowger Blvd Brockville, ON K6V 5K1
36	Burford	County of Brant Burford Library Branch 24 Park Ave Burford, ON NOE 1A0
37	Caledonia	St. Leonard's Caledonia Site 11 Argyle St N Caledonia, ON N3W 1B7
38	Cambridge	Cambridge Idea Exchange 1 North Square, Cambridge, ON N1S 2K6
39	Cardiff	Cardiff Branch of the Haliburton County Public Library 2778 Monck Road Cardiff, ON KOL 1M0
40	Chatham	Adult Language and Learning 240 King St W, Chatham, ON N7M 1E7
41	Chatham	Chatham Employment Resource Centre 240 King St W, Chatham, ON N7M 1E7
42	Chatham	Dresden Library 187 Brown St, Dresden, ON NOP 1M0
43	Chatham	Goodwill 300 Lacroix St, Chatham, ON N7M 6M6
44	Chatham	Ridgetown Library 54 Main St W, Ridgetown, ON NOP 2C0
45	Chatham	Thamesville Library 3 London Rd, Thamesville, ON NOP 2K0

No.	Community of Access Point	Organization Name and Address
46	Chatham	Wallaceburg Library 209 James St, Wallaceburg, ON N8A 2N4
47	Chatham	Walpole Island Library 136 Tecumseh Rd, Wallaceburg, ON N8A 4K9
48	Collingwood	Tracks Employment Services 50 Hume St, Collingwood, ON L9Y 1V2
49	Collingwood	Simcoe County Ontario Works 485 Second St Collingwood, ON L9Y 3J7
50	Collingwood	YMCA- Youth Outreach Centre 200 Hume St Collingwood, ON L9Y 4E8
51	Cornwall	Big Brother/Big Sisters of SDG 101 Third St W Cornwall, ON K6J 2N9
52	Cornwall	Community Action Network Against Abuse 26 Montreal Road Cornwall, ON K6H 1B1
53	Cornwall	Immigrant Services of SD&G 600 McConnell Ave Cornwall, ON K6H 4M1
54	Cornwall	Job Zone 144 Pitt St, Cornwall, ON K6J 3P4
55	Cornwall	Ontario Disability Support Program 4 Montreal Road Cornwall, ON K6H 1B1
56	Cornwall	Ontario Works of SD&G 340 Pitt St, Cornwall, ON K6H 5T9
57	Cornwall	Tri-County Literacy Council of SDG 101 Second St, W Cornwall, ON K6J 1G4

No.	Community of Access Point	Organization Name and Address
58	Cornwall	Women Entrepreneur of SDG 100 Water St, E Cornwall, ON K6H 6G4
59	Cornwall	Youth Services - Children's Aid Society of SDG 150 Boundary Road Cornwall, ON K6H 6J5
60	Courtice	Agilec 1403 King St, E Unit 6 Courtice, ON L1E 2J6
61	Curve Lake First Nation	Curve Lake First Nation, Ontario Works 22 Winookeedaa St, Curve Lake, ON KOL 1R0
62	Deer Lake First Nation	Deer Lake First Nation Ontario Works Deer Lake, ON POV 1N0
63	Dorchester	Middlesex Public Library 2123 Dorchester Rd, Dorchester, ON NOL 1G2
64	Dorset	Dorset Branch of the Haliburton Public Library 1051 Main St, Dwight, ON POA 1H0
65	Dunnville	Dunnville Public Library 317 Chestnut St, Dunnville, ON N1A 2H4
66	Dunnville	Grand Erie District School Board Grand Erie Learning Centre 110 Helena St, Dunnville, ON N1A 2S5
67	Dunnville	St Leonards 208 Broad St E, Dunnville, ON N1A 1G2
68	Edwardsburg	Edwardsburgh-Cardinal Public Library 618 County Road 2 Cardinal, ON KOE 1E0

No.	Community of Access Point	Organization Name and Address
69	Exeter	Huron County Library - Exeter Branch 330 Main St S, Exeter, ON NOM 1S6
70	Fergus	2nd Chances Employment Couselling 160 St David St S #160 Fergus, ON N1M 2L3
71	Fergus	Agilec 370 St Andrew St W #2 Fergus, ON N1M 1N9
72	Fort Erie	Light City Church (Fort Erie Learning Centre) 549 Garrison Rd, Fort Erie, ON L2A 1N5
73	Gloucester	Agilec 1900 City Park Dr #100 Gloucester, ON K1J 1A3
74	Goderich	Huron County Library - Goderich 52 Montreal St, Goderich, ON N7A 2G4
75	Gooderham	Gooderham Gooderham Branch of the Haliburton Public Library 1032 Gooderham St, Gooderham, ON KOM 1R0
76	Grand Bend	Middlesex Library - Grand Bend Branch 15 Gill Rd, Grand Bend, ON NOM 1T0
77	Gravenhurst	Employment North 410 Muskoka Rd S, Gravenhurst, ON P1P 1J4
78	Gravenhurst	Ontario Works 190 Harvie St, Gravenhurst, ON P1P 1S9
79	Gravenhurst	South Muskoka Literacy Centre - Gravenhurst 690 Muskoka Rd S, Gravenhurst, ON P1P 1K2

No.	Community of Access Point	Organization Name and Address
80	Grimsby	Employment Help Centre 63 Main St W, Grimsby, ON L3M 4H1
81	Hagersville	Hagersville Public Library 13 Alma St, N Hagersville, ON NOA 1H0
82	Haileybury	Temiskaming Métis Community Council 439 Ferguson Avenue Haileybury, ON POJ 1K0
83	Haliburton	Dysart Branch of the Haliburton Public Library 78 Maple Ave Haliburton, ON KOM 1S0
84	Haliburton	Ontario Works 49 Maple Ave Haliburton, ON KOM 1S0
85	Hanover	YMCA Employment 425 10th St, Hanover, ON N4N 1P8
86	Hawkesbury	Centre de services et emploi 134 Main St, E #201 Hawkesbury, ON K6A 1A3
87	Hiawatha First Nation	Hiawatha Employment & Resources 123 Paudash St, Hiawatha, ON K9J 0E6
88	Highland Grove	Highland Grove Branch of the Haliburton Public Library 5373 Loop Road Highland Grove, ON K0L 2A0
89	Huntsville	The Hub 1 Crescent Rd, Huntsville, ON P1H 1Z6
90	Huntsville	YMCA Employment and Literacy Service 60 King William St, Huntsville, ON P1H 1G3
91	Innisfil	Innisfil Public Library - Lake Location 967 Innisfil Beach Rd, Innisfil, ON L9S 1V3

No.	Community of Access Point	Organization Name and Address
92	Jarvis	Jarvis Public Library 2 Monson Jarvis, ON NOA 1J0
93	Kemptville	TR Leger School of Adult 40 Campus Dr Kemptville, ON KOG 1J0
94	Keswick	Ice Palace Keswick Public Library 90 Wexford Dr, Keswick, ON L4P 3P7
95	Keswick	Job Skills 155 Riverglen Dr, Keswick, ON L4P 3M3
96	Keswick	Keswick High School 100 Biscayne Blvd, Keswick, ON L4P 3S2
97	Kincardine	Adult Learning Centre Kincardine Library 727 Queen St, Kincardine, ON N2Z 1Z9
98	Kitchener	Kitchener Public Library 85 Queen St, North, Kitchener, ON N2H 2H1
99	Lac Seul First Nation	Lac Seul Ontario Works Hudson, ON POV 1X0
100	Lakefield	Agilec 14 Queen St, Lakefield, ON KOL 2H0
101	Leamington	New Canadians' Centre of Excellence 24 Oak St E, Leamington, ON N8H 2C2
102	Lindsay	John Howard Society, Outreach Literacy 31 Peel St, Lindsay, ON K9V 3L9
103	Lindsay	Kawartha Lakes Public Library 190 Kent St, W Lindsay, ON K9V Y26

No.	Community of Access Point	Organization Name and Address
104	Lindsay	VCCS Employment Services 370 Kent St, W Unit 5 Lindsay, ON K9V 6G8
105	Listowel	Perth County Public Library 260 Main St W, Listowel, ON N4W 1A1
106	London	London Employment Help Centre 100-150 Dufferin Ave London, ON N6A 5N6
107	London	Nokee Kwe - Southwest Employment Centre 1069 Wellington Rd #1069, London, ON N6E 2H6
108	Lucan	Lucan Library 270 Main St, Lucan, ON NOM 2J0
109	Markdale	Grey Highlands Public Library 75 Walker St, Markdale, ON NOC 1H0
110	Markham	York Support Service Network (Mental Health Division) - Markham Location 50 McIntosh Dr #239 Markham, ON L3R 9T3
111	Meaford	Military Family Resource Centre 139152 Grey Rd 112, Building M208 Meaford, ON N4L 0A1
112	Midland	Y Employment Centre 334 King St, Unit 1 Midland, ON L4R 3M8
113	Migisi Sahgaigan (Eagle Lake First Nation)	Migisi Ontario Works Ojibway Dr, Migisi Sahgaigan, ON POV 3H0
114	Minden	John Howard Society Literacy Services 14 Iga Road Minden, ON KOM 2K0
115	Minden	Minden Hills Branch of Haliburton County Public Library 174 Bobcaygeon Road Minden, ON KOM 2K0

No.	Community of Access Point	Organization Name and Address
116	Mississaugas of the New Credit First Nation	Ontario Works 659 New Credit Road, Unit 2 Hagersville, ON NOA 1H0
117	Mississaugas of Scugog Island First Nation	Mississaugas of Scugog Island First Nation Health & Resource Centre 22600 Island Rd Port Perry, ON L9L 1B6
118	Moraviantown	Eenda Akehkiimund Delaware Employment and Training Centre 14763 School House Line RR #3 Thamesville ON NOP 2K0
119	Morrisburg	TR Leger 12580 Stormont, Dundas and Glengarry County Road 2 Morrisburg, ON K0C 1X0
120	Mount Forest	Agilec 392 Main St N, Mount Forest, ON NOG 2L2
121	Nepean	Y Employment Access Centre 1642 Merivale Rd Suite 2000 Nepean, ON K2G 4A1
122	Nepean	Pinecrest-Queensway Community Health Centre 1365 Richmond Rd #2 Ottawa, ON K2B 6R7
123	New Liskeard	Employment Options Emplo 290 Armstrong St, N New Liskeard, ON P0J 1P0
124	Newmarket	Canadian Hearing Services / DeafBlind Ontario Services 713 Davis Dr Newmarket, ON L3Y 2R3
125	Newmarket	Newmarket Public Library 438 Park Ave, Newmarket, ON L3Y 1W1

No.	Community of Access Point	Organization Name and Address
126	Newmarket	Southlake Hospital Regional Health Centre 596 Davis Dr, Newmarket, ON L3Y 2P9
127	Niagara Falls	McBain Community Centre 7150 Montrose Road, Niagara Falls, ON L2H 3N3
128	Niagara Falls	Niagara Falls Library 4848 Victoria Ave, Niagara Falls, ON L2E 4C5
129	Niagara Falls	YMCA Employment Centre 8123 Lundy's Ln, Niagara Falls, ON L2H 1H1
130	North Bay	Native Education & Training College (NETC) 147 McIntyre St, W North Bay, ON P1B 2Y6
131	North York	North York General Hospital 4001 Leslie St, North York, ON M2K 1E1
132	Orangeville	Dufferin County Community Services-Ontario Works 30 Centre St, Orangeville, ON L9W 2X3
133	Orangeville	Early-On Orangeville 30 Centre St, Orangeville, ON L9W 2X3
134	Orangeville	Georgian College Orangeville Campus 22 Centennial Rd, Orangeville, ON L9W 1P8
135	Orillia	Agilec 50 Andrew St S #100, Orillia, ON L3V 7T5
136	Orillia	County of Simcoe Ontario Works 50 Andrew St, S #2 Orilla, ON L3V 7T5
137	Orillia	Orillia and District Literacy Centre 55 Nottawasaga St, Orillia, ON L3V 3J5

No.	Community of Access Point	Organization Name and Address
138	Orillia	Orillia Public Library 36 Mississaga St W, Orillia, ON L3V 3A6
139	Ottawa	Rideau-Rockcliffe Community Resource Centre 815 St. Laurent Blvd Ottawa, ON K1K 3A7
140	Owen Sound	Adult Learning Centre 824 1st Ave W Owen Sound, ON N4K 4K4
141	Owen Sound	Big Brothers Big Sisters of Grey Bruce 2nd Floor, Harmony Centre 890 4th Ave. E. Owen Sound, ON N4K 2N7
142	Owen Sound	Owen Sound Library 824 1st Ave W, Owen Sound, ON N4K 4K4
143	Owen Sound	YMCA Employment 945 3rd Ave E Suite 23, Owen Sound, ON N4K 6W2
144	Paris	Paris Library 12 William St Paris, ON N3L 1K7
145	Park Hill	Middlesex Library - Park Hill Branch 229 B Parkhill Main St, Parkhill, ON NOM 2K0
146	Parry Sound	Agilec 108 Ontario St., Burk's Falls, ON POA 1C0
147	Pembroke	Algonquin College - Pembroke Community Employment Services 141 Lake St, Pembroke, ON K8A 6X9
148	Peterborough	Agilec 863 Chemong Road #20A Peterborough, ON K9H 5Z5
149	Peterborough	Employment Planning & Counselling (EPC) 418 Sheridan St, Peterborough, ON K9H 3J9

No.	Community of Access Point	Organization Name and Address
150	Peterborough	Fleming CREW 1550 Lansdowne St, W Peterborough, ON K9J 1Z5
151	Pikangikum First Nation	Ontario Works Pikangikum, ON POV 2L0
152	Port Colborne	Port Cares 61 Nickel St, Port Colborne, ON L3K 1B3
153	Port Elgin	Port Elgin Library 708 Goderich St, Port Elgin, ON NOH 2C0
154	Port Elgin	Saugeen Shores Adult Learning Centre 515 Goderich St, Unit 211, Port Elgin, ON NOH 2C0
155	Port Hope	Port Hope Public Library 31 Queen St, Port Hope, ON L1A 2Y8
156	Prescott	Community Futures Development Corporation 197 Water St, W Prescott, ON KOE 1T0
157	Prescott	TR Leger 490 Jessup St, Prescott, ON KOE 1T0
158	Rama	Ogemawahj Band Office 5984 Rama Road Orillia, ON L3V 6H6
159	Rama	Rama Public Library 5482 Highway 12 South Ramara, ON L3V 0S2
160	Ripley	Township of Huron Kinloss – The Hub 46 Queen St, Ripley, ON NOG 2R0
161	Rockland	TR Leger - School of Adult, Alternative and Continuing Education 860 Caron St, Unit 4 Rockland, ON K4K 1H1

No.	Community of Access Point	Organization Name and Address
162	Roseneath	Roseneath Library 9059 45 Roseneath, ON K0K 2X0
163	Saint George	County of Brant St George Library Branch 78 Main St N Saint George, ON N0E 1N0
164	Sandy Lake First Nation	Ontario Works P.O. Box 12 Sandy Lake, ON P0V 1V0
165	Sarnia	Sarnia Library 124 Christina St, S Sarnia, ON N7T 8E1
166	Saugeen First Nation	Saugeen First Nation Public Library 812 French Bay Road; Site #3, GMB #3. Saugeen, ON N0H 2L0
167	Scotland/Oakland	County of Brant Scotland/Oakland Library Branch 281 Oakland Rd Scotland, ON N0E 1R0
168	Shawanaga First Nation	Shawanaga First Nation Ontario Works RR#1 Nobel, ON P0G 1G0
169	Shelburne	Centre Dufferin District High School 150 Fourth Aveune Shelburne, ON L9V 3R5
170	Shelburne	Dufferin Oaks Long Term Care Facility 151 Centre St, Shelburne, ON L9V 3R7
171	Shelburne	Small Business Enterprise Orangville 200 Lakeview Court Upper Level Orangeville, ON L9W 5J7
172	Shelburne	Small Business Enterprise Shelburne 167 Centre St, Entrance E Shelburne, ON L9V 3R8
173	Simcoe	Fanshawe Employment Office 5 Queensway East, Simcoe, ON N3Y 5K2

No.	Community of Access Point	Organization Name and Address
174	Simcoe	Grand Erie District School Board Grand Erie Learning Centre - Simcoe Campus 150 West Street, Simcoe, ON N3Y 5C1
175	Simcoe	Simcoe Branch Library 46 Colborne St S, Simcoe, ON N3Y 4H3
176	Six Nations of the Grand River Territory	Grand Erie District School Board Grand Erie Learning Centre - Six Nations Campus 347 Erie Ave, Brantford, ON N3S 2H7
177	Six Nations of the Grand River Territory	Grand River Employment and Training 16 Sunrise Ct, Ohsweken, ON NOA 1M0
178	Six Nations of the Grand River Territory	Ogwehoweh Skills and Trades Training Centre 16 Sunrise Ct, Ohsweken, ON NOA 1M0
179	Six Nations of the Grand River Territory	Six Nations of Grand River Ontario Works 12 Sunrise Ct, Ohsweken, ON NOA 1M0
180	Smithville	Employment Help Centre Smithville 249 St. Catharines St Village Square Plaza, Units 10 and 13, Smithville, ON LOR 2A0
181	St. Catharines	Folk Art Multicultural Centre 85 Church St, St. Catharines, ON L2R 3C7
182	St. Catharines	Niagara Regional Native Centre 140 Welland Ave, St. Catharines, ON L2R 2N6
183	St. Catharines	Ontario Works 234 Bunting Road St. Catharines ON L2R 6Z4
184	St. Catharines	YMCA Employment Centre 285 Bunting Rd, St. Catharines, ON L2M 5V7

No.	Community of Access Point	Organization Name and Address
185	St. Thomas	Elgin Mall 417 Wellington St, St Thomas, ON N5R 5J5
186	St. Thomas	Northside Neighbourhood Hub 114 Confederation Dr, St Thomas, ON N5P 3P4
187	St. Thomas	St. Thomas Public Library 153 Curtis St, St Thomas, ON N5P 3Z7
188	Stouffville	York Works - Stouffville Location 111 Sandiford Dr, Whitchurch-Stouffville, ON L4A 0Z9
189	Stratford	Conestoga Career Centre 130 Youngs St, Stratford, ON N5A 1J7
190	Strathroy	Community Employment Choices 16 Second St, Strathroy, ON N7G 3H8
191	Summerstown	Glengarry Inter-Agency Group 580 Main St, S Alexandria, ON K0C 1A0
192	Sutton	Georgina Trades and Training Institute 5207 Baseline Rd, Sutton, ON L0E 1R0
193	Sutton	Kinsmen 3 Fairpark Lane, Sutton West, ON L0E 1R0
194	Sutton	Sutton High School 20798 Dalton Rd, Georgina, ON L0E 1R0
195	Sutton	York Works 20887 Dalton Rd, Sutton, ON L0E 1R0
196	Teeswater	Teeswater Library 2 Clinton St S, Teeswater, ON N0G 2S0

No.	Community of Access Point	Organization Name and Address
197	Temiskaming Shores	Temiskaming Shores and Area Chamber of Commerce 883356 Hwy 65 P.O. Box 811 New Liskeard, ON POJ 1P0
198	Timmins	Employment Options Emplo 330 2nd Ave Timmins, ON P4N 8A4
199	Trenton	Military Family Resource Centre 50 Rivers Dr, Trenton, ON K8V 1C5
200	Uxbridge	Uxbridge Heritage Railroad and Public Library 9 Toronto St S, Uxbridge, ON L9P 1P7
201	Vaughan	Seneca College Location varies within York Region based on the location selected by Seneca College for the community partner tradeshow
202	Walkerton	Adult Learning Centre 200 McNabb St, Suite 202 Walkerton, ON NOG 2V0
203	Walkerton	QUILL Learning Network 200 McNabb St, Walkerton, ON NOG 2V0
204	Walkerton	VPI Employment Services 200 McNab St #201, Walkerton, ON NOG 2V0
205	Walkerton	Walkerton Library 249 Durham St E, Walkerton, ON NOG 2V0
206	Welland	Employment Solutions 825 Ontario Rd, Welland, ON L3B 5V6
207	West Lorne	West Elgin Support Services 160 Main St, West Lorne, ON N0L 2P0

No.	Community of Access Point	Organization Name and Address
208	Whitesand First Nation	Whitesand First Nation Ontario Works Armstrong, ON POT 1A0
209	Wilberforce	Wilberforce Branch of the Haliburton Public Library 1101 Holmes Road Wilberforce, ON KOL 3C0
210	Winchester	Job Zone 530 Fred St, Winchester, ON KOC 2K0
211	Windsor	Can-am Indian friendship center 2929 Howard Ave, Windsor, ON N8X 4W4
212	Windsor	Employment Options Emplo 615 Ouellette Ave, Windsor, ON N9A 5W6
213	Windsor	St Clair College St Clair College Dr, Windsor, ON N9G 3C3

Appendix C – List of Requests for Programs and Courses Not Currently Available
(September 1 – December 31, 2021)

Name	Type	Delivery	Full-Time/ Part-Time	Sector	Language	Numbers of Requests
Nutrition Live Class	Course	Synchronous	N/A	Literacy	English	1
Personal Support Worker International	Program	Asynchronous	N/A	College	English	1
						2

Appendix D – Social Media Reports

Social Media Quarterly Report – October to December 2021

Reach breakdown for 43 Contact North | Contact Nord Facebook pages

Facebook page by community or territory	Overall reach Oct-Dec 2021	Overall reach Oct-Dec 2020
Main corporate page	162,661	140,900
Akwesasne	174	1,330
Atikokan, Dryden, Fort Frances, Ignace & Sioux Lookout	12,151	7,617
Attawapiskat	51	339
Central Algoma (Sault Ste. Marie)	59,935	57,494
Chapleau	1,025	1,033
Chatham Kent Lambton (Wallaceburg)	1,879	3,880
Cochrane	3,681	18,470
Elgin Middlesex	95	27
Grand River (Brantford)	2,158	14,545
Greenstone	6,478	4,590
Grey Bruce	3,147	4,031
Hastings Limestone (Madoc)	4,045	3,924
Hawkesbury	161	4,390
Hearst District	1,121	1,418
Huron Bluewater (Clinton)	721	1,228
Iroquois Falls	1,179	4,351
Kapuskasing	2,366	1,171
Kenora	1,063	1,614
Lake Superior North Shore	15,331	28,155
Manitoulin Island	60,658	48,450
Mid-North (Espanola, Elliot Lake)	18,542	14,692
Moosonee/Moose Factory/Mushkegowuk	990+	24,648
Muskoka Haliburton (Bracebridge, Haliburton)	2,384	40,671
Niagara Region (St. Catharines)	1,816	3,635
Nipigon & Red Rock	819	873

Nipissing District and Area (North Bay)	51,364	8,892
Northumberland Durham (Cobourg)	17,512	13,358
Ottawa-Carleton (Orléans)	4,993	4,819
Parry Sound	44,236	84,308
Pembroke (FB page created December 2021)	590	
Rainy River/Big Grassy	3,945	321
Red Lake	2,734	709
Shelburne	1,760	3,584
South Simcoe York (Georgina)	7,199	2,416
Sudbury (FB page created in Aug. 2021)	17,112	
Superior North (Sandy Lake FN, North Caribou FN & Big Trout Lake FN)	216	276
Temiskaming Region (Haileybury, Kirkland Lake)	3,992	19,174
Timmins	2,162	1,511
Upper Canada – Cornwall	1,143	21,307
Wawa	2,418	3,827
Windsor	221	3,178
GTA (started Aug. 10, 2021)	2,116	
TOTALS	528,344	601,156

The reach decreased by 12% in 2021 when comparing the October to December periods of 2020 & 2021. Reasons for the decrease include:

1. Staff shortages at centre locations.
2. Facebook algorithm that has reduced organic views by an average of 5.2%. (Source: [How the Facebook Algorithm Works in 2021 and How to Make it Work for You](#))
3. Changes in dollars spent on social media advertising.

Impressions breakdown for Instagram, Twitter and LinkedIn – Contact North | Contact Nord main corporate pages

Social media	Impressions Oct.-Dec. 2021	Impressions Oct.-Dec. 2020
Instagram	32,452	18,362
Twitter	145,731	43,877
LinkedIn	99,816	5,191

Increases and decreases in impressions are generally attributed to advertising levels in a quarter.

Follower Growth – Contact North | Contact Nord main corporate pages

Social media	End of this quarter (Dec. 31, 2021)	End of last quarter (Sept. 30, 2021)
Facebook	3,085	3,070
Instagram	324	288
Twitter	2,747	2,737
LinkedIn	1,537	797

Number of posts – Contact North | Contact Nord main corporate pages

Social media	Oct.-Dec. 2021	Oct.-Dec. 2020
Facebook	205	112
Instagram	211	120
Twitter	146	119
LinkedIn	147	108

Engagement statistics – Contact North | Contact Nord main corporate pages

Social media	Oct.-Dec. 2021	Oct.-Dec. 2020
Facebook	5,428	1804
Instagram	1,026	867
Twitter	4,587	470
LinkedIn	547	553

Appendix E – List of Communities Served

Community Name	Online Learning Centre	Region
Aamjiwaang First Nation (Chippewas of Sarnia First Nation)	Wallaceburg	Southwest Region
Aberfoyle	Woodstock	Southwest Region
Acton	Shelburne	South Central Region
Addison	Cornwall	Southeast Region
Agnew Lake	Espanola	North Central Region
Ailsa Craig	Clinton	Southwest Region
Ajax	Cobourg	Southeast Region
Akwesasne	Akwesasne First Nation	Southeast Region
Alban	St. Charles	North Central Region
Alcona	Georgina	South Central Region
Alderville First Nation	Cobourg	Southeast Region
Alexandria	Cornwall	Southeast Region
Alfred	Hawkesbury	Southeast Region
Algoma Mills	Mississauga First Nation	North Central Region
Algonquin Highlands	Haliburton	Southeast Region
Algonquins of Pikwàkanagàn First Nation (Golden Lake)	Haliburton	Southeast Region
Allan Park	Kincardine	South Central Region
Allenford	Kincardine	South Central Region
Allensville	Bracebridge	Southeast Region
Alliston	Shelburne	South Central Region
Alma	Shelburne	South Central Region
Almonte	Orleans	Southeast Region
Alnwick	Cobourg	Southeast Region
Alvinston	Wallaceburg	Southwest Region
Amaranth	Shelburne	South Central Region
Amberley	Kincardine	South Central Region
Amherst Island	Madoc	Southeast Region
Amherstburg	Windsor	Southwest Region
Amherstview	Madoc	Southeast Region
Ancaster	Brantford	South Central Region
Angus	Shelburne	South Central Region
Animakee Wa Zhing #37 First Nation	Kenora	Northwest Region
Anishinaabeg Of Naongashing First Nation (Big Island)	Big Grassy River First Nation	Northwest Region
Ansnoeveldt	Georgina	South Central Region

Community Name	Online Learning Centre	Region
Apple Hill	Cornwall	Southeast Region
Apsley	Haliburton	Southeast Region
Ardtree	Bracebridge	Southeast Region
Argyle	Georgina	South Central Region
Arkona	St. Thomas	Southwest Region
Armstrong	Thunder Bay	Thunder Bay Region
Arnprior	Orleans	Southeast Region
Aroland First Nation	Nakina	Northwest Region
Arthur	Shelburne	South Central Region
Arva	St. Thomas	Southwest Region
Ashburn	Cobourg	Southeast Region
Ashton	Orleans	Southeast Region
Ashworth	Bracebridge	Southeast Region
Aspdin	Bracebridge	Southeast Region
Astorville	Astorville	North Central Region
Athens	Cornwall	Southeast Region
Atherley	Bracebridge	Southeast Region
Atikameksheng Anishnawbek First Nation	Sudbury	Sudbury Region
Atikokan	Atikokan	Northwest Region
Attawapiskat First Nation	Attawapiskat First Nation	Northeast Region
Auburn	Clinton	Southwest Region
Aundeck Omni Kaning First Nation (Sucker Creek)	MChigeeng	North Central Region
Aurora	Georgina	South Central Region
Avonmore	Cornwall	Southeast Region
Aylmer	St. Thomas	Southwest Region
Ayr	Woodstock	Southwest Region
Azilda	Sudbury	Sudbury Region
Baddow	Haliburton	Southeast Region
Baden	Woodstock	Southwest Region
Badjeros	Shelburne	South Central Region
Bailieboro	Cobourg	Southeast Region
Bainsville	Cornwall	Southeast Region
Bala	Bracebridge	Southeast Region
Balderson	Madoc	Southeast Region
Ballantrae	Georgina	South Central Region
Balm Beach	Parry Sound	North Central Region
Balmertown	Red Lake	Northwest Region

Community Name	Online Learning Centre	Region
Balsam Creek	North Bay	North Central Region
Baltimore	Cobourg	Southeast Region
Bancroft	Madoc	Southeast Region
Baptiste	Haliburton	Southeast Region
Barber's Bay	South Porcupine	Northeast Region
Bardsville	Bracebridge	Southeast Region
Barrhaven	Orleans	Southeast Region
Barrie	Georgina	South Central Region
Barrie Island	Gore Bay	North Central Region
Barry's Bay	Haliburton	Southeast Region
Barwick	Rainy River	Northwest Region
Batchewana First Nation	Sault Ste. Marie	North Central Region
Bath	Madoc	Southeast Region
tteaux	Shelburne	South Central Region
Battersea	Madoc	Southeast Region
Bayfield	Clinton	Southwest Region
Bayham	St. Thomas	Southwest Region
Bayshore Village	Bracebridge	Southeast Region
Baysville	Bracebridge	Southeast Region
Bayview Village	Georgina	South Central Region
Beachburg	Orleans	Southeast Region
Bealton	Brantford	South Central Region
Beamsville	St. Catharines	South Central Region
Beardmore	Red Rock	Northwest Region
Bearskin Lake First Nation	Big Trout Lake First Nation	Northwest Region
Beatrice	Bracebridge	Southeast Region
Beaumaris	Bracebridge	Southeast Region
Beausoleil First Nation (Christian Island)	Parry Sound	North Central Region
Beaver Lake	Espanola	North Central Region
Beaverhouse First Nation	Kirkland Lake	Northeast Region
Beaverton	Georgina	South Central Region
Beeton	Shelburne	South Central Region
Belle River	Windsor	Southwest Region
Belle Vallée	Haileybury	Northeast Region
Belleville	Madoc	Southeast Region
Bellrock	Madoc	Southeast Region
Belmont	St. Thomas	Southwest Region

Community Name	Online Learning Centre	Region
Belwood	Shelburne	South Central Region
Bent River	Bracebridge	Southeast Region
Bethesda	Georgina	South Central Region
Bewdley	Cobourg	Southeast Region
Big Cedar	Madoc	Southeast Region
Big Chute	Parry Sound	North Central Region
Big Grassy River First Nation	Big Grassy River First Nation	Northwest Region
Big Trout Lake First Nation (Kitchenuhmaykoosib Inninuwug)	Big Trout Lake First Nation	Northwest Region
Biigtigong Nishnaabeg (Ojibways of the Pic River First Nation) (Heron Bay)	Marathon	Northwest Region
Billings	MChigeeng	North Central Region
Bill's Corners	Brantford	South Central Region
Binbrook	Brantford	South Central Region
Bingwi Neyaashi Anishinaabek (Sand Point First Nation)	Thunder Bay	Thunder Bay Region
Birds Creek	Haliburton	Southeast Region
Birkendale	Bracebridge	Southeast Region
Bishops Mills	Cornwall	Southeast Region
Black River	Matheson	Northeast Region
Blackburn Hamlet	Orleans	Southeast Region
Blackhawk	Rainy River	Northwest Region
Blacks Corner	Orleans	Southeast Region
Blackstock	Cobourg	Southeast Region
Blenheim	Wallaceburg	Southwest Region
Bleazard Valley	Sudbury	Sudbury Region
Blind River	Mississauga First Nation	North Central Region
Blue Mountains	Shelburne	South Central Region
Blyth	Clinton	Southwest Region
Bobcaygeon	Haliburton	Southeast Region
Bolsover	Georgina	South Central Region
Bolton	Shelburne	South Central Region
Bonfield	Bonfield	North Central Region
Bonnechere	Haliburton	Southeast Region
Bonville	Cornwall	Southeast Region
Borden	Shelburne	South Central Region
Borups Corner	Dryden	Northwest Region
Boston Creek	Kirkland Lake	Northeast Region

Community Name	Online Learning Centre	Region
Bothwell	Wallaceburg	Southwest Region
Boulter	Madoc	Southeast Region
Bourget	Orleans	Southeast Region
Bowmanville	Cobourg	Southeast Region
Bracebridge	Bracebridge	Southeast Region
Bradford	Georgina	South Central Region
Braeside	Orleans	Southeast Region
Brampton	Shelburne	South Central Region
Branchton	Woodstock	Southwest Region
Brantford	Brantford	South Central Region
Brechin	Georgina	South Central Region
Breslau	Woodstock	Southwest Region
Brighton	Cobourg	Southeast Region
Bright's Grove	Wallaceburg	Southwest Region
Brisbane	Shelburne	South Central Region
Britannia	Orleans	Southeast Region
Britt	Parry Sound	North Central Region
Brockville	Cornwall	Southeast Region
Brooklin	Cobourg	Southeast Region
Bruce Mines	Thessalon First Nation	North Central Region
Brudenell	Haliburton	Southeast Region
Brunswick House First Nation	Chapleau	Northeast Region
Brussels	Clinton	Southwest Region
Buckhorn	Haliburton	Southeast Region
Burford	Brantford	South Central Region
Burgessville	Woodstock	Southwest Region
Burk's Falls	South River	North Central Region
Burleigh Falls	Haliburton	Southeast Region
Burlington	Brantford	South Central Region
Burnaby	St. Catharines	South Central Region
Burnbrae	Cobourg	Southeast Region
Burnstown	Orleans	Southeast Region
Burnt River	Haliburton	Southeast Region
Burpee	Gore Bay	North Central Region
Byng Inlet	Parry Sound	North Central Region
Cache Bay	Sturgeon Falls	North Central Region
Caistorville	St. Catharines	South Central Region
Caledon	Shelburne	South Central Region

Community Name	Online Learning Centre	Region
Caledonia	Brantford	South Central Region
Callander	Astorville	North Central Region
Calstock	Constance Lake First Nation	Northeast Region
Calton	St. Thomas	Southwest Region
Camborne	Cobourg	Southeast Region
Cambridge	Woodstock	Southwest Region
Camden East	Madoc	Southeast Region
Cameron	Cobourg	Southeast Region
Camerons Point	Cornwall	Southeast Region
Camilla	Shelburne	South Central Region
Camlachie	Wallaceburg	Southwest Region
Campbellford	Madoc	Southeast Region
Campbellville	Woodstock	Southwest Region
Cannington	Georgina	South Central Region
Capreol	Sudbury	Sudbury Region
Caramat	Longlac	Northwest Region
Cardiff	Haliburton	Southeast Region
Cardinal	Cornwall	Southeast Region
Cargill	Kincardine	South Central Region
Carleton Place	Orleans	Southeast Region
Carling	Parry Sound	North Central Region
Carlisle	Clinton	Southwest Region
Carluké	Brantford	South Central Region
Carnarvon	Haliburton	Southeast Region
Carrying Place	Madoc	Southeast Region
Cashtown Corners	Shelburne	South Central Region
Casselman	Cornwall	Southeast Region
Castleton	Cobourg	Southeast Region
Cat Lake First Nation	Pickle Lake	Northwest Region
Catchacoma	Haliburton	Southeast Region
Cayuga	Brantford	South Central Region
Cedar Springs	Wallaceburg	Southwest Region
Cedar Valley	Georgina	South Central Region
Central Patricia	Pickle Lake	Northwest Region
Centralia	Clinton	Southwest Region
Centurion	Bracebridge	Southeast Region
Chalk River	Mattawa	North Central Region
Chamberlain	Englehart	Northeast Region

Community Name	Online Learning Centre	Region
Chapleau	Chapleau	Northeast Region
Chapleau Cree First Nation	Chapleau	Northeast Region
Chapleau Ojibway First Nation	Chapleau	Northeast Region
Chaput Hughes	Kirkland Lake	Northeast Region
Charing Cross	Wallaceburg	Southwest Region
Charlton	Englehart	Northeast Region
Chatham	Wallaceburg	Southwest Region
Chatsworth	Kincardine	South Central Region
Chelmsford	Sudbury	Sudbury Region
Cheltenham	Shelburne	South Central Region
Chepstow	Kincardine	South Central Region
Chesley	Kincardine	South Central Region
Chesterville	Cornwall	Southeast Region
Chippewas of Georgina Island First Nation	Georgina	South Central Region
Chippewas of Mnjikaning First Nation (Rama)	Bracebridge	Southeast Region
Chippewas of Nawash Unceded First Nation (Cape Crocker)	Kincardine	South Central Region
Chippewas of the Thames First Nation	St. Thomas	Southwest Region
Chisholm	Astorville	North Central Region
Chute-à-Blondeau	Hawkesbury	Southeast Region
Claremont	Georgina	South Central Region
Clarence	Orleans	Southeast Region
Clarence Creek	Orleans	Southeast Region
Clarington	Cobourg	Southeast Region
Clarksburg	Shelburne	South Central Region
Clayton	Orleans	Southeast Region
Clear Lake, Bracebridge	Bracebridge	Southeast Region
Clear Lake, Parry Sound District	South River	North Central Region
Clearview	Shelburne	South Central Region
Clearwater Bay	Kenora	Northwest Region
Clifford	Kincardine	South Central Region
Clinton	Clinton	Southwest Region
Cloud Bay	Thunder Bay	Thunder Bay Region
Cloyne	Madoc	Southeast Region
Clute	Cochrane	Northeast Region
Cobalt	Haileybury	Northeast Region
Cobden	Orleans	Southeast Region

Community Name	Online Learning Centre	Region
Coboconk	Haliburton	Southeast Region
Cobourg	Cobourg	Southeast Region
Cochenour	Red Lake	Northwest Region
Cochrane	Cochrane	Northeast Region
Coe Hill	Madoc	Southeast Region
Colborne	Cobourg	Southeast Region
Colchester	Windsor	Southwest Region
Cold Springs	Cobourg	Southeast Region
Coldwater	Bracebridge	Southeast Region
Collingwood	Shelburne	South Central Region
Comber	Windsor	Southwest Region
Combermere	Haliburton	Southeast Region
Concord	Georgina	South Central Region
Conestogo	Woodstock	Southwest Region
Coniston	Sudbury	Sudbury Region
Conn	Shelburne	South Central Region
Connaught, District of Cochrane	South Porcupine	Northeast Region
Connaught, United Counties of Stormont,Dundas, and Glengarry	Orleans	Southeast Region
Consecon	Madoc	Southeast Region
Constance Lake First Nation	Constance Lake First Nation	Northeast Region
Cookstown	Georgina	South Central Region
Copper Cliff	Sudbury	Sudbury Region
Coppins Corners	Georgina	South Central Region
Corbeil	Astorville	North Central Region
Corbetton	Shelburne	South Central Region
Corbyville	Madoc	Southeast Region
Cormac	Haliburton	Southeast Region
Cornwall	Cornwall	Southeast Region
Corunna	Wallaceburg	Southwest Region
Cottam	Windsor	Southwest Region
Couchiching First Nations	Fort Frances	Northwest Region
Coulson	Bracebridge	Southeast Region
Courtice	Cobourg	Southeast Region
Courtland	Woodstock	Southwest Region
Courtright	Wallaceburg	Southwest Region
Crampton	St. Thomas	Southwest Region
Crediton	Clinton	Southwest Region

Community Name	Online Learning Centre	Region
Creemore	Shelburne	South Central Region
Crooked Bay	Parry Sound	North Central Region
Crossley Hunter	St. Thomas	Southwest Region
Crysler	Cornwall	Southeast Region
Crystal Beach	St. Catharines	South Central Region
Crystal Falls	Sturgeon Falls	North Central Region
Cumberland	Orleans	Southeast Region
Cumberland Beach	Bracebridge	Southeast Region
Curran	Hawkesbury	Southeast Region
Curry Hill	Cornwall	Southeast Region
Curve Lake First Nation	Cobourg	Southeast Region
Dalkeith	Hawkesbury	Southeast Region
Dalrymple	Bracebridge	Southeast Region
Damascus	Shelburne	South Central Region
Dane	Kirkland Lake	Northeast Region
Dashwood	Clinton	Southwest Region
Dawn	Wallaceburg	Southwest Region
Deacon	Haliburton	Southeast Region
Deep River	Mattawa	North Central Region
Deer Lake First Nation	Sandy Lake First Nation	Northwest Region
Delaware	St. Thomas	Southwest Region
Delaware Nation at Moraviantown First Nation (Moravian of the Thames)	Wallaceburg	Southwest Region
Delhi	Brantford	South Central Region
Deloro	Madoc	Southeast Region
Denbigh	Madoc	Southeast Region
Departure Lake	Smooth Rock Falls	Northeast Region
Desbarats	Thessalon First Nation	North Central Region
Desboro	Kincardine	South Central Region
Deseronto	Madoc	Southeast Region
Deux Rivieres	Mattawa	North Central Region
Devlin	Fort Frances	Northwest Region
Dinorwic	Dryden	Northwest Region
Dobie	Kirkland Lake	Northeast Region
Dokis First Nation (Waabnoong Bemjwang)	Dokis First Nation	North Central Region
Dorchester	St. Thomas	Southwest Region
Dorion	Thunder Bay	Thunder Bay Region

Community Name	Online Learning Centre	Region
Dorset	Bracebridge	Southeast Region
Douglas	Orleans	Southeast Region
Douro	Madoc	Southeast Region
Dover Centre	Wallaceburg	Southwest Region
Dowling	Sudbury	Sudbury Region
Drayton	Woodstock	Southwest Region
Dresden	Wallaceburg	Southwest Region
Driftwood	Cochrane	Northeast Region
Drumbo	Woodstock	Southwest Region
Dryden	Dryden	Northwest Region
Duart	Wallaceburg	Southwest Region
Dubreuilville	Wawa	Northwest Region
Duclos Point	Georgina	South Central Region
Dunchurch	Parry Sound	North Central Region
Dundalk	Shelburne	South Central Region
Dundas	Brantford	South Central Region
Dundurn	Brantford	South Central Region
Dunnville	Brantford	South Central Region
Dunrobin	Orleans	Southeast Region
Dunsford	Cobourg	Southeast Region
Duntroon	Shelburne	South Central Region
Durham	Kincardine	South Central Region
Dutton	St. Thomas	Southwest Region
Duttona Beach	St. Thomas	Southwest Region
Dwight	Bracebridge	Southeast Region
Dyment	Dryden	Northwest Region
Dymond	Haileybury	Northeast Region
Eabametoong First Nation (Fort Hope)	Pickle Lake	Northwest Region
Eagle Lake First Nation (Migisi Sahgaigan)	Dryden	Northwest Region
Eagle Lake, Dysart et al	Haliburton	Southeast Region
Eagle River	Dryden	Northwest Region
Ear Falls	Red Lake	Northwest Region
Earlton	Englehart	Northeast Region
East Ferris	Astorville	North Central Region
East Garafraxa	Shelburne	South Central Region
East Gwillimbury	Georgina	South Central Region
East York	Georgina	South Central Region

Community Name	Online Learning Centre	Region
East Zorra	Woodstock	Southwest Region
Echo Bay	Sault Ste. Marie	North Central Region
Eden	St. Thomas	Southwest Region
Eden Mills	Woodstock	Southwest Region
Edgar	Bracebridge	Southeast Region
Eganville	Orleans	Southeast Region
Egbert	Shelburne	South Central Region
Eldee	North Bay	North Central Region
Eldon	Georgina	South Central Region
Eldorado	Madoc	Southeast Region
Elgin	Madoc	Southeast Region
Elginburg	Madoc	Southeast Region
Elizabethtown	Cornwall	Southeast Region
Elk Lake	Englehart	Northeast Region
Elliot Lake	Elliot Lake	North Central Region
Elmira	Woodstock	Southwest Region
Elmvale	Shelburne	South Central Region
Elmwood	Kincardine	South Central Region
Elora	Shelburne	South Central Region
Embro	Woodstock	Southwest Region
Embrun	Orleans	Southeast Region
Emo	Fort Frances	Northwest Region
Emsdale	South River	North Central Region
Englehart	Englehart	Northeast Region
English River	Ignace	Northwest Region
Ennismore	Cobourg	Southeast Region
Erin	Shelburne	South Central Region
Erinsville	Madoc	Southeast Region
Ernestown	Madoc	Southeast Region
Escott	Cornwall	Southeast Region
Espanola	Espanola	North Central Region
Essex	Windsor	Southwest Region
Estaire	Sudbury	Sudbury Region
Etobicoke	Georgina	South Central Region
Eton Rugby	Dryden	Northwest Region
Evansville	Gore Bay	North Central Region
Everett	Shelburne	South Central Region
Exeter	Clinton	Southwest Region

Community Name	Online Learning Centre	Region
Falconbridge	Sudbury	Sudbury Region
Falkland	Brantford	South Central Region
Fauquier	Kapusksing	Northeast Region
Fenelon Falls	Haliburton	Southeast Region
Fergus	Shelburne	South Central Region
Feversham	Shelburne	South Central Region
Field	Sturgeon Falls	North Central Region
Finch	Cornwall	Southeast Region
Fingal	St. Thomas	Southwest Region
Finland	Rainy River	Northwest Region
Finmark	Thunder Bay	Thunder Bay Region
Fishers Glen	Brantford	South Central Region
Fisherville	Brantford	South Central Region
Flesherton	Shelburne	South Central Region
Flinton	Madoc	Southeast Region
Floradale	Shelburne	South Central Region
Floral Park	Bracebridge	Southeast Region
Florence	Wallaceburg	Southwest Region
Foleyet	Chapleau	Northeast Region
Fonthill	St. Catharines	South Central Region
Foot's Bay	Parry Sound	North Central Region
Forest	Wallaceburg	Southwest Region
Forest Home	Bracebridge	Southeast Region
Forest Mills	Madoc	Southeast Region
Foresters Falls	Orleans	Southeast Region
Formosa	Kincardine	South Central Region
Fort Albany First Nation	Moosonee	Northeast Region
Fort Erie	St. Catharines	South Central Region
Fort Frances	Fort Frances	Northwest Region
Fort Irwin	Haliburton	Southeast Region
Fort Severn First Nation	Big Trout Lake First Nation	Northwest Region
Fort William First Nation	Thunder Bay	Thunder Bay Region
Foxboro	Madoc	Southeast Region
Foymount	Haliburton	Southeast Region
Frankford	Madoc	Southeast Region
Frankville	Orleans	Southeast Region
Fraserdale	Smooth Rock Falls	Northeast Region
Fraserville	Cobourg	Southeast Region

Community Name	Online Learning Centre	Region
Frederick House	Cochrane	Northeast Region
French River	St. Charles	North Central Region
Gamebridge	Georgina	South Central Region
Gananoque Junction	Madoc	Southeast Region
Garden River First Nation	Sault Ste. Marie	North Central Region
Garson	Sudbury	Sudbury Region
Gelert	Haliburton	Southeast Region
Genier	Cochrane	Northeast Region
George	Brantford	South Central Region
Georgetown	Shelburne	South Central Region
Georgina	Georgina	South Central Region
Geraldton	Geraldton	Northwest Region
Gilford	Georgina	South Central Region
Gilford Beach	Georgina	South Central Region
Gilmour	Madoc	Southeast Region
Ginoogaming First Nation	Ginoogaming First Nation	Northwest Region
Glammis	Kincardine	South Central Region
Glanworth	St. Thomas	Southwest Region
Glen Alda	Madoc	Southeast Region
Glen Huron	Shelburne	South Central Region
Glen Meyer	St. Thomas	Southwest Region
Glen Orchard	Bracebridge	Southeast Region
Glen Robertson	Hawkesbury	Southeast Region
Glen Ross	Madoc	Southeast Region
Glen Tay	Madoc	Southeast Region
Glen Walter	Cornwall	Southeast Region
Glenarm	Georgina	South Central Region
Glenburnie	Madoc	Southeast Region
Glencoe	St. Thomas	Southwest Region
Gloucester	Orleans	Southeast Region
Goderich	Clinton	Southwest Region
Gogama	South Porcupine	Northeast Region
Golden	Red Lake	Northwest Region
Golden Lake	Haliburton	Southeast Region
Gooderham	Haliburton	Southeast Region
Goodwood Cedar Valley	Georgina	South Central Region
Gore Bay	Gore Bay	North Central Region
Gores Landing	Cobourg	Southeast Region

Community Name	Online Learning Centre	Region
Gorham	Thunder Bay	Thunder Bay Region
Gormley	Georgina	South Central Region
Gorrie	Clinton	Southwest Region
Goulais River	Sault Ste. Marie	North Central Region
Gowganda	Englehart	Northeast Region
Grafton	Cobourg	Southeast Region
Grand Bend	Clinton	Southwest Region
Grand Valley	Shelburne	South Central Region
Grande Pointe	Wallaceburg	Southwest Region
Grasshill	Georgina	South Central Region
Grassy Narrows First Nation (Asubpeeschoseewagong First Nation)	Kenora	Northwest Region
Gravel Hill	Cornwall	Southeast Region
Gravenhurst	Bracebridge	Southeast Region
Greater Napanee	Madoc	Southeast Region
Greely	Orleans	Southeast Region
Green Valley	Cornwall	Southeast Region
Greensborough	Georgina	South Central Region
Gregoires Mill	Smooth Rock Falls	Northeast Region
Grey Highlands	Shelburne	South Central Region
Griffith	Madoc	Southeast Region
Grimsby	St. Catharines	South Central Region
Gros Cap	Sault Ste. Marie	North Central Region
Guelph	Woodstock	Southwest Region
Gull Bay First Nation (Kiashke Zaaging Anishinaabek)	Thunder Bay	Thunder Bay Region
Guthrie	Bracebridge	Southeast Region
Hagersville	Brantford	South Central Region
Haileybury	Haileybury	Northeast Region
Hainsville	Cornwall	Southeast Region
Haley Station	Orleans	Southeast Region
Haliburton	Haliburton	Southeast Region
Halls Lake	Haliburton	Southeast Region
Halton Hills	Shelburne	South Central Region
Hamilton	Brantford	South Central Region
Hammond	Orleans	Southeast Region
Hanmer	Sudbury	Sudbury Region
Hanover	Kincardine	South Central Region

Community Name	Online Learning Centre	Region
Harcourt	Haliburton	Southeast Region
Hardwood Lake	Madoc	Southeast Region
Harrietsville	St. Thomas	Southwest Region
Harriston	Shelburne	South Central Region
Harrow	Windsor	Southwest Region
Harrowsmith	Madoc	Southeast Region
Hartington	Madoc	Southeast Region
Harty	Kapuskasing	Northeast Region
Harwood	Cobourg	Southeast Region
Hastings	Cobourg	Southeast Region
Havelock	Madoc	Southeast Region
Hawkesbury	Hawkesbury	Southeast Region
Hawkestone	Bracebridge	Southeast Region
Hawkesville	Woodstock	Southwest Region
Hawkins Corners	Bracebridge	Southeast Region
Haysville	Woodstock	Southwest Region
Hearst	Hearst	Northeast Region
Heidelberg	Woodstock	Southwest Region
Hensall	Clinton	Southwest Region
Henvey Inlet First Nation	Parry Sound	North Central Region
Hepworth	Kincardine	South Central Region
Herrons Mills	Madoc	Southeast Region
Heyden	Sault Ste. Marie	North Central Region
Hiawatha First Nation	Cobourg	Southeast Region
Hickson	Woodstock	Southwest Region
Hidden Valley	Bracebridge	Southeast Region
Highland Grove	Haliburton	Southeast Region
Hillcrest	Brantford	South Central Region
Hilliardton	Englehart	Northeast Region
Hillsburgh	Shelburne	South Central Region
Hillsdale	Bracebridge	Southeast Region
Hilton	Thessalon First Nation	North Central Region
Hilton Beach	Thessalon First Nation	North Central Region
Hockley Valley	Shelburne	South Central Region
Holland Landing	Georgina	South Central Region
Holt	Georgina	South Central Region
Holtyre	Matheson	Northeast Region
Holyrood	Kincardine	South Central Region

Community Name	Online Learning Centre	Region
Honey Harbour	Parry Sound	North Central Region
Honeywood	Shelburne	South Central Region
Hope Bay	Kincardine	South Central Region
Hornepayne	White River	Northwest Region
Hornepayne First Nation	White River	Northwest Region
Hornings Mills	Shelburne	South Central Region
Horseshoe Valley	Bracebridge	Southeast Region
Houseys Rapids	Bracebridge	Southeast Region
Hoyle	South Porcupine	Northeast Region
Hudson, Kenora District	Sioux Lookout	Northwest Region
Hudson, Timiskaming District	Haileybury	Northeast Region
Huntsville	Bracebridge	Southeast Region
Hurds Lake	Orleans	Southeast Region
Hurdville	Parry Sound	North Central Region
Hurkett	Red Rock	Northwest Region
Huron Park	Clinton	Southwest Region
Hymers	Thunder Bay	Thunder Bay Region
Ignace	Ignace	Northwest Region
Ilderton	St. Thomas	Southwest Region
Ingersoll	Woodstock	Southwest Region
Ingleside	Cornwall	Southeast Region
Ingoldsby	Haliburton	Southeast Region
Inkerman	Orleans	Southeast Region
Innerkip	Woodstock	Southwest Region
Innisfil	Georgina	South Central Region
Inverary	Madoc	Southeast Region
Inverhuron	Kincardine	South Central Region
Iona Station	St. Thomas	Southwest Region
Iron Bridge	Thessalon First Nation	North Central Region
Irondale	Haliburton	Southeast Region
Iroquois Falls	Iroquois Falls	Northeast Region
Iskatewizaagegan #39 Independent First Nation (Shoal Lake No. 39)	Kenora	Northwest Region
Island Falls	Smooth Rock Falls	Northeast Region
Island Grove	Georgina	South Central Region
Jackson Point	Georgina	South Central Region
Jarratt	Bracebridge	Southeast Region
Jarvis	Brantford	South Central Region

Community Name	Online Learning Centre	Region
Jellico	Geraldton	Northwest Region
Jellyby	Cornwall	Southeast Region
Jerseyville	Brantford	South Central Region
Jocelyn	Thessalon First Nation	North Central Region
Jogues	Hearst	Northeast Region
Jordan	St. Catharines	South Central Region
Kagawong	MChigeeng	North Central Region
Kahshe Lake	Bracebridge	Southeast Region
Kakabeka Falls	Thunder Bay	Thunder Bay Region
Kaladar	Madoc	Southeast Region
Kaministiquia	Thunder Bay	Thunder Bay Region
Kamiskotia	South Porcupine	Northeast Region
Kapuskasing	Kapuskasing	Northeast Region
Kasabonika Lake First Nation	Big Trout Lake First Nation	Northwest Region
Kashabowie	Atikokan	Northwest Region
Kashechwan First Nation	Moosonee	Northeast Region
Katrine	South River	North Central Region
Kearney	South River	North Central Region
Kearns	Kirkland Lake	Northeast Region
Keene	Cobourg	Southeast Region
Keewatin	Kenora	Northwest Region
Kee-Way-Win First Nation	Sandy Lake First Nation	Northwest Region
Keldon	Shelburne	South Central Region
Kemptville	Orleans	Southeast Region
Kenabeek	Englehart	Northeast Region
Kenilworth	Shelburne	South Central Region
Kenmore	Orleans	Southeast Region
Kennisis Lake	Haliburton	Southeast Region
Kenogami	Kirkland Lake	Northeast Region
Kenora	Kenora	Northwest Region
Kent Bridge	Wallaceburg	Southwest Region
Keswick	Georgina	South Central Region
Kettle & Stony Point First Nation	Clinton	Southwest Region
Kettleby	Shelburne	South Central Region
Khartum	Madoc	Southeast Region
Kilgorie	Shelburne	South Central Region
Killaloe	Haliburton	Southeast Region
Killarney	Sudbury	Sudbury Region

Community Name	Online Learning Centre	Region
Kilsyth	Kincardine	South Central Region
Kilworthy	Bracebridge	Southeast Region
Kincardine	Kincardine	South Central Region
King City	Georgina	South Central Region
King Kirkland	Kirkland Lake	Northeast Region
Kingfisher Lake First Nation	Wunnumin Lake First Nation	Northwest Region
King-Lebel	Kirkland Lake	Northeast Region
Kingston	Madoc	Southeast Region
Kingsville	Windsor	Southwest Region
Kinmount	Haliburton	Southeast Region
Kirkfield	Georgina	South Central Region
Kirkland Lake	Kirkland Lake	Northeast Region
Kitchener	Woodstock	Southwest Region
Kitigan	Kapuskasing	Northeast Region
Kitley	Cornwall	Southeast Region
Kleinburg	Shelburne	South Central Region
Klueys Bay	Bracebridge	Southeast Region
Komoka	St. Thomas	Southwest Region
L'Orignal	Hawkesbury	Southeast Region
Lac Des Mille Lacs First Nation	Ignace	Northwest Region
Lac La Croix First Nation	Atikokan	Northwest Region
Lac Seul First Nation (Frenchmans Head, Kejick Bay, Whitefish Bay)	Sioux Lookout	Northwest Region
Lafontaine Beach	Parry Sound	North Central Region
Lagoon City	Georgina	South Central Region
Laird	Sault Ste. Marie	North Central Region
Lake Dalrymple	Bracebridge	Southeast Region
Lake Doré	Orleans	Southeast Region
Lake Nipigon OjibwayFirst Nation (Animbiigoo Zaagi'igan)	Red Rock	Northwest Region
Lake St. Peter	Haliburton	Southeast Region
Lakefield	Cobourg	Southeast Region
Lakeshore	Windsor	Southwest Region
Lambeth	St. Thomas	Southwest Region
Lanark	Madoc	Southeast Region
Lancaster	Cornwall	Southeast Region
Langton	Brantford	South Central Region
Lansdowne	Cornwall	Southeast Region
Lappe	Thunder Bay	Thunder Bay Region

Community Name	Online Learning Centre	Region
Larder Lake	Kirkland Lake	Northeast Region
LaSalle	Windsor	Southwest Region
Latchford	Haileybury	Northeast Region
Latchford Bridge	Madoc	Southeast Region
Laurel	Shelburne	South Central Region
Lavigne	Sturgeon Falls	North Central Region
Leamington	Windsor	Southwest Region
Lefaivre	Hawkesbury	Southeast Region
Leitrim	Orleans	Southeast Region
Letts Corners	Orleans	Southeast Region
Levack	Sudbury	Sudbury Region
Lighthouse Cove	Wallaceburg	Southwest Region
Limoges	Orleans	Southeast Region
Lincoln	St. Catharines	South Central Region
Lindsay	Cobourg	Southeast Region
Linwood	Woodstock	Southwest Region
Lions Head	Kincardine	South Central Region
Listowel	Clinton	Southwest Region
Little Britain	Cobourg	Southeast Region
Little Current	MChigeeng	North Central Region
Little Hawk Lake	Haliburton	Southeast Region
Lively	Sudbury	Sudbury Region
Lochlin	Haliburton	Southeast Region
Lombardy	Madoc	Southeast Region
London	St. Thomas	Southwest Region
Long Lake 58 First Nation	Longlac	Northwest Region
Long Sault	Cornwall	Southeast Region
Longford	Bracebridge	Southeast Region
Longlac	Longlac	Northwest Region
Lorneville	Georgina	South Central Region
Lorrain Valley	Haileybury	Northeast Region
Lower Stafford	Orleans	Southeast Region
Lowther	Hearst	Northeast Region
Lucan	Clinton	Southwest Region
Lucknow	Kincardine	South Central Region
Lunenburg	Cornwall	Southeast Region
Lynden	Brantford	South Central Region
Lyndhurst	Cornwall	Southeast Region

Community Name	Online Learning Centre	Region
Lynedoch	Brantford	South Central Region
M'Chigeeng First Nation	MChigeeng	North Central Region
Macdiarmid	Red Rock Indian Band	Northwest Region
MacTier	Parry Sound	North Central Region
Madawaska	Haliburton	Southeast Region
Madoc	Madoc	Southeast Region
Madsen	Red Lake	Northwest Region
Magnetawan	South River	North Central Region
Magnetawan First Nation	Parry Sound	North Central Region
Maidstone	Windsor	Southwest Region
Malahide	St. Thomas	Southwest Region
Mallorytown	Cornwall	Southeast Region
Manilla	Georgina	South Central Region
Manitouwadge	Manitouwadge	Northwest Region
Manitowaning	Wikwemikong First Nation	North Central Region
Manotick	Orleans	Southeast Region
Mansfield	Shelburne	South Central Region
Maple	Georgina	South Central Region
Maple Leaf	Haliburton	Southeast Region
Marathon	Marathon	Northwest Region
Markdale	Kincardine	South Central Region
Markham	Georgina	South Central Region
Markstay	St. Charles	North Central Region
Marlbank	Madoc	Southeast Region
Marmora	Madoc	Southeast Region
Marsville	Shelburne	South Central Region
Marten Falls First Nation (Ogoki Post)	Summer Beaver First Nation	Northwest Region
Martintown	Cornwall	Southeast Region
Maryhill	Woodstock	Southwest Region
Massey	Massey	North Central Region
Matachewan	Kirkland Lake	Northeast Region
Matchewan First Nations	Kirkland Lake	Northeast Region
Matheson	Matheson	Northeast Region
Mattagami First Nation	South Porcupine	Northeast Region
Mattawa	Mattawa	North Central Region
Mattice	Hearst	Northeast Region
Maxville	Cornwall	Southeast Region
Maynooth	Haliburton	Southeast Region

Community Name	Online Learning Centre	Region
McArthur Mills	Madoc	Southeast Region
McCracken's Landing	Madoc	Southeast Region
McDougall	Parry Sound	North Central Region
McGregor	Windsor	Southwest Region
McIntyre	Shelburne	South Central Region
McKellar	Parry Sound	North Central Region
McKenzie Island	Red Lake	Northwest Region
McKerrow	Espanola	North Central Region
McNab-Braeside	Orleans	Southeast Region
Meaford	Kincardine	South Central Region
Melissa	Bracebridge	Southeast Region
Merlin	Wallaceburg	Southwest Region
Merrickville	Orleans	Southeast Region
Metcalfe	Orleans	Southeast Region
Michipicoten First Nation	Wawa	Northwest Region
Micksburg	Orleans	Southeast Region
Midhurst	Georgina	South Central Region
Midland	Parry Sound	North Central Region
Mildmay	Kincardine	South Central Region
Milford	Madoc	Southeast Region
Milford Bay	Bracebridge	Southeast Region
Millar Hill	Bracebridge	Southeast Region
Millbank	Clinton	Southwest Region
Millbrook	Cobourg	Southeast Region
Millgrove	Brantford	South Central Region
Millhaven	Madoc	Southeast Region
Milton	Brantford	South Central Region
Milverton	Clinton	Southwest Region
Minaki	Kenora	Northwest Region
Mindemoya	MChigeeng	North Central Region
Minden	Haliburton	Southeast Region
Mine Centre	Fort Frances	Northwest Region
Miners Bay	Haliburton	Southeast Region
Minesing	Shelburne	South Central Region
Minett	Bracebridge	Southeast Region
Minnitaki	Dryden	Northwest Region
Minto	Shelburne	South Central Region

Community Name	Online Learning Centre	Region
Mishkeegogamang First Nation (Osnaburgh)	Pickle Lake	Northwest Region
Missanabie Cree First Nation	Wawa	Northwest Region
Mississauga	Shelburne	South Central Region
Mississauga First Nation (#8)	Mississauga First Nation	North Central Region
Mississaugas of Scugog Island First Nation	Georgina	South Central Region
Mississaugas of the New Credit First Nation	Brantford	South Central Region
Mitaanjigamiing First Nation (Stanjikoming First Nation)	Fort Frances	Northwest Region
Mitchell	Clinton	Southwest Region
Mitchell's Bay	Wallaceburg	Southwest Region
Mohawks of the Bay of Quinte-Tyendinaga	Madoc	Southeast Region
Monck	Shelburne	South Central Region
Monetville	Dokis First Nation	North Central Region
Monkland	Cornwall	Southeast Region
Mono	Shelburne	South Central Region
Monteith	Iroquois Falls	Northeast Region
Monticello	Shelburne	South Central Region
Moonbeam	Kapuskasing	Northeast Region
Moonstone	Bracebridge	Southeast Region
Moore Falls	Haliburton	Southeast Region
Moorefield	Shelburne	South Central Region
Mooretown	Wallaceburg	Southwest Region
Moose Cree First Nation (Moose Factory)	Moose Cree First Nation	Northeast Region
Moose Creek	Cornwall	Southeast Region
Moose Deer Point First Nation	Parry Sound	North Central Region
Moose Factory Island	Moose Cree First Nation	Northeast Region
Moosonee	Moosonee	Northeast Region
Morganston	Cobourg	Southeast Region
Morley	Rainy River	Northwest Region
Morpeth	Wallaceburg	Southwest Region
Morrisburg	Cornwall	Southeast Region
Morrison Landing	Bracebridge	Southeast Region
Morson	Big Grassy River First Nation	Northwest Region
Mortimers Point	Bracebridge	Southeast Region
Mount Albert	Georgina	South Central Region

Community Name	Online Learning Centre	Region
Mount Brydges	St. Thomas	Southwest Region
Mount Carmel	Clinton	Southwest Region
Mount Forest	Shelburne	South Central Region
Mount Hope	Brantford	South Central Region
Mt. Healy	Brantford	South Central Region
Muirkirk	Wallaceburg	Southwest Region
Mulmur	Shelburne	South Central Region
Muncey	St. Thomas	Southwest Region
Munsee-Delaware First Nation	St. Thomas	Southwest Region
Munster	Orleans	Southeast Region
Murillo	Thunder Bay	Thunder Bay Region
Murvale	Madoc	Southeast Region
Muskoka Falls	Bracebridge	Southeast Region
Muskrat Dam Lake First Nation	North Caribou Lake First Nation	Northwest Region
Naicatchewenin First Nation	Fort Frances	Northwest Region
Nairn Centre	Espanola	North Central Region
Nakina	Nakina	Northwest Region
Nanticoke	Brantford	South Central Region
Nashville	Shelburne	South Central Region
Naughton	Sudbury	Sudbury Region
Navan	Orleans	Southeast Region
Neebing	Thunder Bay	Thunder Bay Region
Nepean	Orleans	Southeast Region
Nephton	Madoc	Southeast Region
Neskantaga First Nation (Lansdowne House)	Pickle Lake	Northwest Region
Nesterville	Thessalon First Nation	North Central Region
Nestor Falls	Kenora	Northwest Region
Neustadt	Kincardine	South Central Region
New Dundee	Woodstock	Southwest Region
New Hamburg	Woodstock	Southwest Region
New Liskeard	Haileybury	Northeast Region
New Lowell	Shelburne	South Central Region
New Sarum	St. Thomas	Southwest Region
New Tecumseth	Shelburne	South Central Region
Newboro	Madoc	Southeast Region
Newburgh	Madoc	Southeast Region
Newcastle	Cobourg	Southeast Region

Community Name	Online Learning Centre	Region
Newholm	Bracebridge	Southeast Region
Newmarket	Georgina	South Central Region
Newtonville	Cobourg	Southeast Region
Niagara Falls	St. Catharines	South Central Region
Niagara on the Lake	St. Catharines	South Central Region
Nibinamik First Nation (Summer Beaver)	Summer Beaver First Nation	Northwest Region
Nicolston	Shelburne	South Central Region
Nighthawk	South Porcupine	Northeast Region
Nigigoonsiminikaaning First Nation (Red Gut)	Fort Frances	Northwest Region
Nipigon	Red Rock	Northwest Region
Nipissing	Astorville	North Central Region
Nipissing First Nation (Garden Village)	Nipissing First Nation	North Central Region
Nobel	Parry Sound	North Central Region
Nobelton	Shelburne	South Central Region
Noelville	St. Charles	North Central Region
Nogies Creek	Haliburton	Southeast Region
Nolalu	Thunder Bay	Thunder Bay Region
Norland	Haliburton	Southeast Region
Normandale	Brantford	South Central Region
North Augusta	Cornwall	Southeast Region
North Bay	North Bay	North Central Region
North Bruce	Kincardine	South Central Region
North Caribou Lake First Nation (Weagamow, Round Lake)	North Caribou Lake First Nation	Northwest Region
North Cobalt	Haileybury	Northeast Region
North Gower	Orleans	Southeast Region
North Kawartha	Madoc	Southeast Region
North Lancaster	Cornwall	Southeast Region
North Portage	Bracebridge	Southeast Region
North Spirit Lake First Nation	Sandy Lake First Nation	Northwest Region
North York	Georgina	South Central Region
Northbrook	Madoc	Southeast Region
Northwest Angle No. 33 First Nation	Kenora	Northwest Region
Norwich	Brantford	South Central Region
Norwood	Madoc	Southeast Region
Nottawa	Shelburne	South Central Region
Novar	South River	North Central Region

Community Name	Online Learning Centre	Region
Oakland	Brantford	South Central Region
Oakville	Brantford	South Central Region
Oakwood	Georgina	South Central Region
Ochiichagwe' Babigo'ining Ojibway Nation (Dalles)	Kenora	Northwest Region
O'Connor	Thunder Bay	Thunder Bay Region
Odessa	Madoc	Southeast Region
Ohsweken	Brantford	South Central Region
Ojibways of Onigaming First Nation	Kenora	Northwest Region
Old Spring Bay	MChigeeng	North Central Region
Oliphant	Kincardine	South Central Region
Omemee	Cobourg	Southeast Region
Onaping	Sudbury	Sudbury Region
Oneida Nation of the Thames First Nation	St. Thomas	Southwest Region
Opasatika	Kapuskasing	Northeast Region
Orangeville	Shelburne	South Central Region
Orchardville	Shelburne	South Central Region
Orillia	Bracebridge	Southeast Region
Orleans	Orleans	Southeast Region
Oro Station	Bracebridge	Southeast Region
Oro-Medonte	Bracebridge	Southeast Region
Orono	Cobourg	Southeast Region
Orrville	Parry Sound	North Central Region
Orton	Shelburne	South Central Region
Osgoode	Orleans	Southeast Region
Oshawa	Cobourg	Southeast Region
Ottawa	Orleans	Southeast Region
Otterville	Brantford	South Central Region
Owen Sound	Kincardine	South Central Region
Oxdrift	Dryden	Northwest Region
Oxford Station	Cornwall	Southeast Region
Oxtongue Lake	Bracebridge	Southeast Region
Pain Court	Wallaceburg	Southwest Region
Paisley	Kincardine	South Central Region
Pakenham	Orleans	Southeast Region
Palgrave	Shelburne	South Central Region
Palmer Rapids	Haliburton	Southeast Region
Palmerston	Clinton	Southwest Region

Community Name	Online Learning Centre	Region
Paradise Point	Parry Sound	North Central Region
Parham	Madoc	Southeast Region
Paris	Brantford	South Central Region
Parkhill	Clinton	Southwest Region
Parry Sound	Parry Sound	North Central Region
Pass Lake	Thunder Bay	Thunder Bay Region
Paudash	Haliburton	Southeast Region
Pawitik (Whitefish Bay First Nation) (Naotkamegwanning)	Kenora	Northwest Region
Pays Plat First Nation	Schreiber	Northwest Region
Peacock Point	Brantford	South Central Region
Peawanuck	Attawapiskat First Nation	Northeast Region
Pefferlaw	Georgina	South Central Region
Pelham	St. Catharines	South Central Region
Pembroke	Orleans	Southeast Region
Penetanguishene	Parry Sound	North Central Region
Perkinsfield	Parry Sound	North Central Region
Perrault Falls	Red Lake	Northwest Region
Perth	Madoc	Southeast Region
Petawawa	Mattawa	North Central Region
Peterborough	Cobourg	Southeast Region
Petersburg	Woodstock	Southwest Region
Petrolia	Wallaceburg	Southwest Region
Phelpston	Shelburne	South Central Region
Pic Mobert First Nation	Pic Mobert First Nation	Northwest Region
Pickering	Cobourg	Southeast Region
Pickle Lake	Pickle Lake	Northwest Region
Picton	Madoc	Southeast Region
Pikangikum First Nation	Sioux Lookout	Northwest Region
Pike Bay	Kincardine	South Central Region
Pine River	Kincardine	South Central Region
Pinewood	Rainy River	Northwest Region
Plantagenet	Hawkesbury	Southeast Region
Plattsville	Woodstock	Southwest Region
Pleasant View	Orleans	Southeast Region
Point Edward	Wallaceburg	Southwest Region
Pointe au Baril	Parry Sound	North Central Region
Pontypool	Cobourg	Southeast Region

Community Name	Online Learning Centre	Region
Poplar Hill First Nation	Red Lake	Northwest Region
Porcupine	South Porcupine	Northeast Region
Porquis Junction	Iroquois Falls	Northeast Region
Port Bolster	Georgina	South Central Region
Port Bruce	St. Thomas	Southwest Region
Port Burwell	St. Thomas	Southwest Region
Port Carling	Bracebridge	Southeast Region
Port Colborne	St. Catharines	South Central Region
Port Cunnington	Bracebridge	Southeast Region
Port Dalhousie	St. Catharines	South Central Region
Port Dover	Brantford	South Central Region
Port Elgin	Kincardine	South Central Region
Port Franks	Clinton	Southwest Region
Port Hope	Cobourg	Southeast Region
Port Lambton	Wallaceburg	Southwest Region
Port Loring	South River	North Central Region
Port McNicoll	Parry Sound	North Central Region
Port Perry	Georgina	South Central Region
Port Robinson	St. Catharines	South Central Region
Port Rowan	Brantford	South Central Region
Port Ryerse	Brantford	South Central Region
Port Sanfield	Bracebridge	Southeast Region
Port Severn	Parry Sound	North Central Region
Port Stanley	St. Thomas	Southwest Region
Port Stanton	Bracebridge	Southeast Region
Port Sydney	Bracebridge	Southeast Region
Potters Landing	Parry Sound	North Central Region
Powassan	South River	North Central Region
Prescott	Cornwall	Southeast Region
Preston Lake	Georgina	South Central Region
Prices Corner	Bracebridge	Southeast Region
Priceville	Shelburne	South Central Region
Proton Station	Shelburne	South Central Region
Providence Bay	MChigeeng	North Central Region
Purdy	Haliburton	Southeast Region
Puslinch	Woodstock	Southwest Region
Quadeville	Madoc	Southeast Region
Queensville	Georgina	South Central Region

Community Name	Online Learning Centre	Region
Quinte West	Madoc	Southeast Region
Rainy River	Rainy River	Northwest Region
Rainy River First Nations	Fort Frances	Northwest Region
Raith	Thunder Bay	Thunder Bay Region
Ramore	Matheson	Northeast Region
Rankin	Orleans	Southeast Region
Rattlesnake Harbour	Brantford	South Central Region
Ravenscliffe	Bracebridge	Southeast Region
Raymond	Bracebridge	Southeast Region
Red Lake	Red Lake	Northwest Region
Red Rock	Red Rock	Northwest Region
Red Rock Indian Band	Red Rock Indian Band	Northwest Region
Redbridge	North Bay	North Central Region
Redditt	Kenora	Northwest Region
Redickville	Shelburne	South Central Region
Redwood	Bracebridge	Southeast Region
Renton	Brantford	South Central Region
Restoule	South River	North Central Region
Rexdale	Georgina	South Central Region
Richan	Dryden	Northwest Region
Richards Landing	Thessalon First Nation	North Central Region
Richmond	Orleans	Southeast Region
Richmond Hill	Georgina	South Central Region
Ridgetown	Wallaceburg	Southwest Region
Ridgeway	St. Catharines	South Central Region
Ripley	Kincardine	South Central Region
River Canard	Windsor	Southwest Region
River Valley	Sturgeon Falls	North Central Region
Roche's Point	Georgina	South Central Region
Rockford	Kincardine	South Central Region
Rockingham	Haliburton	Southeast Region
Rockland	Orleans	Southeast Region
Rockwood	Shelburne	South Central Region
Rocky Bay First Nation	Red Rock	Northwest Region
Rodney	St. Thomas	Southwest Region
Rolphton	Mattawa	North Central Region
Rosedale	Haliburton	Southeast Region
Rosemont	Shelburne	South Central Region

Community Name	Online Learning Centre	Region
Roseneath	Cobourg	Southeast Region
Roslin	Madoc	Southeast Region
Rosseau	Parry Sound	North Central Region
Rosslyn	Thunder Bay	Thunder Bay Region
Rosspport	Schreiber	Northwest Region
Round Lake Centre	Haliburton	Southeast Region
Ruscom Station	Windsor	Southwest Region
Russell	Orleans	Southeast Region
Rutherglen	Mattawa	North Central Region
Sachigo Lake First Nation	Sandy Lake First Nation	Northwest Region
Sagamok Anishnawbek First Nation	Massey	North Central Region
Salem	Shelburne	South Central Region
Sandfield	MChigeeng	North Central Region
Sandusk	Brantford	South Central Region
Sandy Lake First Nation	Sandy Lake First Nation	Northwest Region
Sapawe	Atikokan	Northwest Region
Sarnia	Wallaceburg	Southwest Region
Sauble Beach	Kincardine	South Central Region
Saugeen Nation (Chippewas of Saugeen)	Kincardine	South Central Region
Saugeen Shores	Kincardine	South Central Region
Sault Ste. Marie	Sault Ste. Marie	North Central Region
Savant Lake	Sioux Lookout	Northwest Region
Scarborough	Georgina	South Central Region
Schomberg	Shelburne	South Central Region
Schreiber	Schreiber	Northwest Region
Schumacher	South Porcupine	Northeast Region
Schutt	Madoc	Southeast Region
Scotland	Brantford	South Central Region
Scugog	Georgina	South Central Region
Seaforth	Clinton	Southwest Region
Seagrave	Georgina	South Central Region
Searchmont	Sault Ste. Marie	North Central Region
Sebright	Bracebridge	Southeast Region
Sebringville	Clinton	Southwest Region
Seely's Bay	Madoc	Southeast Region
Seguin	Parry Sound	North Central Region
Seguin Falls	Parry Sound	North Central Region

Community Name	Online Learning Centre	Region
Seine River First Nation	Fort Frances	Northwest Region
Selkirk	Brantford	South Central Region
Serpent River First Nation (Cutler)	Serpent River First Nation	North Central Region
Sesekinika	Kirkland Lake	Northeast Region
Severn Bridge	Bracebridge	Southeast Region
Severn Falls	Bracebridge	Southeast Region
Shabaqua	Thunder Bay	Thunder Bay Region
Shakespeare	Clinton	Southwest Region
Shallow Lake	Kincardine	South Central Region
Shannonville	Madoc	Southeast Region
Shanty Bay	Georgina	South Central Region
Sharbot Lake	Madoc	Southeast Region
Sharon	Georgina	South Central Region
Shawanaga First Nation	Parry Sound	North Central Region
Shebandowan	Thunder Bay	Thunder Bay Region
Shedden	St. Thomas	Southwest Region
Sheguiandah First Nation	Wikwemikong First Nation	North Central Region
Shelburne	Shelburne	South Central Region
Sherwood	Thessalon First Nation	North Central Region
Sheshegwaning First Nation	Gore Bay	North Central Region
Shillington	Matheson	Northeast Region
Shining Tree	Englehart	Northeast Region
Shoal Lake 40 First Nation	Kenora	Northwest Region
Shuniah	Thunder Bay	Thunder Bay Region
Silver Dollar	Ignace	Northwest Region
Silver Water	Gore Bay	North Central Region
Simcoe	Brantford	South Central Region
Singhampton	Shelburne	South Central Region
Sioux Lookout	Sioux Lookout	Northwest Region
Sioux Narrows	Kenora	Northwest Region
Six Nations of the Grand River	Brantford	South Central Region
Skead	Sudbury	Sudbury Region
Slabtown	Orleans	Southeast Region
Slate Falls First Nation (Bamaji Lake)	Sioux Lookout	Northwest Region
Slate River Valley	Thunder Bay	Thunder Bay Region
Sleeman	Rainy River	Northwest Region
Smiths Falls	Orleans	Southeast Region
Smithville	St. Catharines	South Central Region

Community Name	Online Learning Centre	Region
Smooth Rock Falls	Smooth Rock Falls	Northeast Region
Snowball	Georgina	South Central Region
Sombra	Wallaceburg	Southwest Region
South Baymouth	MChigeeng	North Central Region
South Bruce Peninsula	Kincardine	South Central Region
South Gillies	Thunder Bay	Thunder Bay Region
South Glengarry	Cornwall	Southeast Region
South Lancaster	Cornwall	Southeast Region
South Mountain	Orleans	Southeast Region
South Porcupine	South Porcupine	Northeast Region
South River	South River	North Central Region
South Woodslee	Windsor	Southwest Region
Southampton	Kincardine	South Central Region
Southwold	St. Thomas	Southwest Region
Spanish	Serpent River First Nation	North Central Region
Sparta	St. Thomas	Southwest Region
Spence	South River	North Central Region
Spencerville	Cornwall	Southeast Region
Spragge	Serpent River First Nation	North Central Region
Springbrook	Madoc	Southeast Region
Springfield	St. Thomas	Southwest Region
Sprucedale	South River	North Central Region
St. Agatha	Woodstock	Southwest Region
St. Albert	Orleans	Southeast Region
St. Andrews	Cornwall	Southeast Region
St. Catharines	St. Catharines	South Central Region
St. Charles	St. Charles	North Central Region
St. Clements	Woodstock	Southwest Region
St. Davids	St. Catharines	South Central Region
St. Elmo	Bracebridge	Southeast Region
St. George	Brantford	South Central Region
St. Isidore	Hawkesbury	Southeast Region
St. Jacobs	Woodstock	Southwest Region
St. Joseph	Sault Ste. Marie	North Central Region
St. Marys	Clinton	Southwest Region
St. Ola	Madoc	Southeast Region
St. Thomas	St. Thomas	Southwest Region
St. Williams	Brantford	South Central Region

Community Name	Online Learning Centre	Region
Stanley	Thunder Bay	Thunder Bay Region
Stayner	Shelburne	South Central Region
St-Bernardin	Hawkesbury	Southeast Region
St-Eugène	Hawkesbury	Southeast Region
Stevensville	St. Catharines	South Central Region
Stirling	Madoc	Southeast Region
Stirling Falls	South River	North Central Region
Stittsville	Orleans	Southeast Region
Stoco	Madoc	Southeast Region
Stonebrook	Orleans	Southeast Region
Stonecliffe	Mattawa	North Central Region
Stoney Creek	St. Catharines	South Central Region
Stoney Point	Windsor	Southwest Region
Stouffville	Georgina	South Central Region
Straffordville	St. Thomas	Southwest Region
Stratford	Clinton	Southwest Region
Strathroy	St. Thomas	Southwest Region
Stratton	Rainy River	Northwest Region
Sturgeon Bay	Parry Sound	North Central Region
Sturgeon Falls	Sturgeon Falls	North Central Region
Sudbury	Sudbury	Sudbury Region
Summerstown	Cornwall	Southeast Region
Sunderland	Georgina	South Central Region
Sundridge	South River	North Central Region
Sunnidale Corners	Shelburne	South Central Region
Suomi	Thunder Bay	Thunder Bay Region
Sutton	Georgina	South Central Region
Sutton West	Georgina	South Central Region
Swastika	Kirkland Lake	Northeast Region
Swift Rapids	Bracebridge	Southeast Region
Sydenham	Madoc	Southeast Region
Talbotville Royal	St. Thomas	Southwest Region
Tamsworth	Madoc	Southeast Region
Tara	Kincardine	South Central Region
Tarzwell	Kirkland Lake	Northeast Region
Tavistock	Woodstock	Southwest Region
Taykwa Tagamou Nation (New Post)	Cochrane	Northeast Region
Tecumseh	Windsor	Southwest Region

Community Name	Online Learning Centre	Region
Teeswater	Kincardine	South Central Region
Teeterville	Brantford	South Central Region
Tehkummah	MChigeeng	North Central Region
Temagami	Haileybury	Northeast Region
Temagami First Nation (Bear Island)	Haileybury	Northeast Region
Temiskaming Shore	Haileybury	Northeast Region
Terrace Bay	Terrace Bay	Northwest Region
Thamesville	Wallaceburg	Southwest Region
Theford	Clinton	Southwest Region
Thessalon	Thessalon First Nation	North Central Region
Thessalon First Nation	Thessalon First Nation	North Central Region
Thomasburg	Madoc	Southeast Region
Thorndale	St. Thomas	Southwest Region
Thorne	North Bay	North Central Region
Thornhill	Georgina	South Central Region
Thornloe	Englehart	Northeast Region
Thorold	St. Catharines	South Central Region
Thunder Bay	Thunder Bay	Thunder Bay Region
Tilbury	Wallaceburg	Southwest Region
Tillsonburg	Woodstock	Southwest Region
Timmins	South Porcupine	Northeast Region
Tiny	Parry Sound	North Central Region
Tiverton	Kincardine	South Central Region
Tobermory	Kincardine	South Central Region
Toledo	Orleans	Southeast Region
Tomstown	Englehart	Northeast Region
Toronto	Georgina	South Central Region
Torrance	Bracebridge	Southeast Region
Tory Hill	Haliburton	Southeast Region
Tottenham	Shelburne	South Central Region
Townsend	Brantford	South Central Region
Tramore	Haliburton	Southeast Region
Trenton	Madoc	Southeast Region
Trout Creek	South River	North Central Region
Tunis	Iroquois Falls	Northeast Region
Tupperville	Wallaceburg	Southwest Region
Turkey Point	Brantford	South Central Region
Tweed	Madoc	Southeast Region

Community Name	Online Learning Centre	Region
Tyotown	Cornwall	Southeast Region
Udney	Bracebridge	Southeast Region
Udora	Georgina	South Central Region
Uffington	Bracebridge	Southeast Region
Ufford	Bracebridge	Southeast Region
Underwood	Kincardine	South Central Region
Union	St. Thomas	Southwest Region
Unionville	Georgina	South Central Region
Uphill	Haliburton	Southeast Region
Upsala	Ignace	Northwest Region
Uptergrove	Bracebridge	Southeast Region
Utopia	Shelburne	South Central Region
Utterson	Bracebridge	Southeast Region
Uxbridge	Georgina	South Central Region
Val Caron	Sudbury	Sudbury Region
Val Gagne	Iroquois Falls	Northeast Region
Val Rita	Kapuskasing	Northeast Region
Val Therese	Sudbury	Sudbury Region
Val-Côté	Hearst	Northeast Region
Vanastra	Clinton	Southwest Region
Vandorf	Georgina	South Central Region
Vanier	Orleans	Southeast Region
Vankleek Hill	Hawkesbury	Southeast Region
Vankoughnet	Bracebridge	Southeast Region
Varney	Shelburne	South Central Region
Vasey	Parry Sound	North Central Region
Vaughan	Georgina	South Central Region
Verdun	Kincardine	South Central Region
Vermilion Bay	Dryden	Northwest Region
Verner	Sturgeon Falls	North Central Region
Verona	Madoc	Southeast Region
Victoria	Shelburne	South Central Region
Victoria Harbour	Parry Sound	North Central Region
Victoria Road	Haliburton	Southeast Region
Vienna	St. Thomas	Southwest Region
Vineland	St. Catharines	South Central Region
Violet Hill	Shelburne	South Central Region
Virginiatown	Kirkland Lake	Northeast Region

Community Name	Online Learning Centre	Region
Vittoria	Brantford	South Central Region
Vroomanton	Georgina	South Central Region
Wabaseemoong Independent Nations (Whitedog)	Kenora	Northwest Region
Wabauskang First Nation	Red Lake	Northwest Region
Wabigoon Lake Ojibway Nation	Dryden	Northwest Region
Wahgoshig First Nation	Wahgoshig First Nation	Northeast Region
Wahnapiatae	Sudbury	Sudbury Region
Wahnapiatae First Nation	Sudbury	Sudbury Region
Wahta Mohawks	Bracebridge	Southeast Region
Wainfleet	St. Catharines	South Central Region
Walford	Massey	North Central Region
Walford Station	Massey	North Central Region
Walkerton	Kincardine	South Central Region
Wallaceburg	Wallaceburg	Southwest Region
Wallacetown	St. Thomas	Southwest Region
Walpole Island (Bkewanong First Nation)	Wallaceburg	Southwest Region
Walton	Clinton	Southwest Region
Wapekeka First Nation (Angling Lake)	Big Trout Lake First Nation	Northwest Region
Wardsville	St. Thomas	Southwest Region
Wareham	Shelburne	South Central Region
Warina	Cornwall	Southeast Region
Warkworth	Cobourg	Southeast Region
Warminster	Bracebridge	Southeast Region
Warren	St. Charles	North Central Region
Wasaga Beach	Shelburne	South Central Region
Wasauksing First Nation (Parry Island)	Wasauksing First Nation	North Central Region
Washagamis Bay (Obashkaandagaang) First Nation	Kenora	Northwest Region
Washago	Bracebridge	Southeast Region
Waterdown	Brantford	South Central Region
Waterford	Brantford	South Central Region
Waterloo	Woodstock	Southwest Region
Watford	Wallaceburg	Southwest Region
Waubauskene	Parry Sound	North Central Region
Wauzhushk Onigum First Nation (Rat Portage)	Kenora	Northwest Region
Wawa	Wawa	Northwest Region

Community Name	Online Learning Centre	Region
Wawakapewin First Nation (Long Dog)	Big Trout Lake First Nation	Northwest Region
Webbwood	Espanola	North Central Region
Webequie First Nation	Pickle Lake	Northwest Region
Weenusk First Nation (Peawanuck)	Attawapiskat First Nation	Northeast Region
Welland	St. Catharines	South Central Region
Wellesley	Woodstock	Southwest Region
Wellington	Madoc	Southeast Region
Wendover	Hawkesbury	Southeast Region
West Guilford	Haliburton	Southeast Region
West Gwillimbury	Georgina	South Central Region
West Lorne	St. Thomas	Southwest Region
West Montrose	Woodstock	Southwest Region
Westmeath	Orleans	Southeast Region
Westport	Madoc	Southeast Region
Wheatley	Wallaceburg	Southwest Region
Whitby	Cobourg	Southeast Region
White Church	Kincardine	South Central Region
White Lake	Orleans	Southeast Region
White River	White River	Northwest Region
Whitefish	Sudbury	Sudbury Region
Whitefish Falls	Espanola	North Central Region
Whitefish River First Nation (Birch Island)	MChigeeng	North Central Region
Whitesand First Nation	Thunder Bay	Thunder Bay Region
Whitestone	Parry Sound	North Central Region
Whitney	Haliburton	Southeast Region
Wiarion	Kincardine	South Central Region
Wikwemikong First Nation	Wikwemikong First Nation	North Central Region
Wilberforce	Haliburton	Southeast Region
Williamsburg	Cornwall	Southeast Region
Williamsford	Kincardine	South Central Region
Williamstown	Cornwall	Southeast Region
Willowdale	Georgina	South Central Region
Wilno	Haliburton	Southeast Region
Wilsonville	Brantford	South Central Region
Winchester Springs	Cornwall	Southeast Region
Windermere	Bracebridge	Southeast Region
Windham Centre	Brantford	South Central Region

Community Name	Online Learning Centre	Region
Windsor	Windsor	Southwest Region
Wingham	Clinton	Southwest Region
Wolfe Island	Madoc	Southeast Region
Woodbridge	Georgina	South Central Region
Woodington	Bracebridge	Southeast Region
Woodstock	Woodstock	Southwest Region
Woodview	Madoc	Southeast Region
Woodville	Georgina	South Central Region
Wooler	Madoc	Southeast Region
Worthington	Espanola	North Central Region
Wunnumin Lake First Nation	Wunnumin Lake First Nation	Northwest Region
Wyebridge	Parry Sound	North Central Region
Wyecombe	Brantford	South Central Region
Wyoming	Wallaceburg	Southwest Region
Yarker	Madoc	Southeast Region
York	Georgina	South Central Region
Zephyr	Georgina	South Central Region
Zhiibaahaasing First Nation (Cockburn Island)	Gore Bay	North Central Region
Zurich	Clinton	Southwest Region
Total: 1,353		